

Courtesy Of Sharon M Josey Of RE/MAX River City

## \$399,900 - 10951 118 Street, Edmonton

MLS® #E4457340

**\$399,900**

3 Bedroom, 2.00 Bathroom, 1,087 sqft  
Single Family on 0.00 Acres

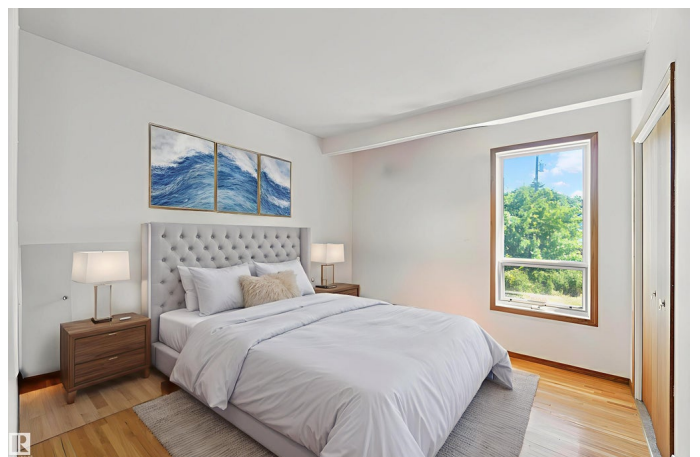
Queen Mary Park, Edmonton, AB

Welcome to Queen Mary Park, a warm, family friendly community offering easy access to schools, shopping, public transit, and just steps from the park itself. This charming bungalow boasts over 2,000 sq ft of living space and includes a single detached garage. The bright, welcoming living room features large windows that flood the space with natural light, complemented by a cozy wood burning fireplace. The well designed kitchen offers a peninsula island and opens to a spacious dining area with patio doors leading to a large deck. Down the hall are 2 generous bedrooms and a 4 piece bath. The fully developed basement adds versatility with a third bedroom, second 4 piece bath, and a large bonus room perfect as a family room or entertainment area. Step outside to a beautifully landscaped, fenced backyard lovingly maintained by Grampa, with mature trees, shrubs, an apple tree, raspberries, and gooseberries. Recent upgrades include shingles (2018), furnace & HWT (2024), and new laminate flooring in the basement.

Built in 1951

### Essential Information

MLS® #	E4457340
Price	\$399,900



Bedrooms	3
Bathrooms	2.00
Full Baths	2
Square Footage	1,087
Acres	0.00
Year Built	1951
Type	Single Family
Sub-Type	Detached Single Family
Style	Bungalow
Status	Active

### **Community Information**

Address	10951 118 Street
Area	Edmonton
Subdivision	Queen Mary Park
City	Edmonton
County	ALBERTA
Province	AB
Postal Code	T5H 3P1

### **Amenities**

Amenities	On Street Parking, Deck
Parking	Single Garage Detached

### **Interior**

Appliances	Dryer, Freezer, Garage Opener, Storage Shed, Stove-Electric, Window Coverings
Heating	Forced Air-1, Natural Gas
Stories	2
Has Basement	Yes
Basement	Full, Finished

### **Exterior**

Exterior	Wood
Exterior Features	Back Lane, Fenced, Fruit Trees/Shrubs, Playground Nearby, Public Transportation, Schools, Shopping Nearby
Roof	Asphalt Shingles
Construction	Wood
Foundation	Concrete Perimeter

## Additional Information

Date Listed September 11th, 2025

Days on Market 4

Zoning Zone 08

DATA IS DEEMED RELIABLE BUT IS NOT GUARANTEED ACCURATE BY THE REALTORS® ASSOCIATION OF EDMONTON. COPYRIGHT 2025 BY THE REALTORS® ASSOCIATION OF EDMONTON. ALL RIGHTS RESERVED. Trademarks are owned or controlled by the Canadian Real Estate Association (CREA) and identify real estate professionals who are members of CREA (REALTOR®, REALTORS®) and/or the quality of services they provide (MLS®, Multiple Listing Service®)

Listing information last updated on September 15th, 2025 at 9:47am MDT