

\$499,900 - 6511 109 Street, Edmonton

MLS® #E4457148

\$499,900

3 Bedroom, 2.50 Bathroom, 1,556 sqft

Single Family on 0.00 Acres

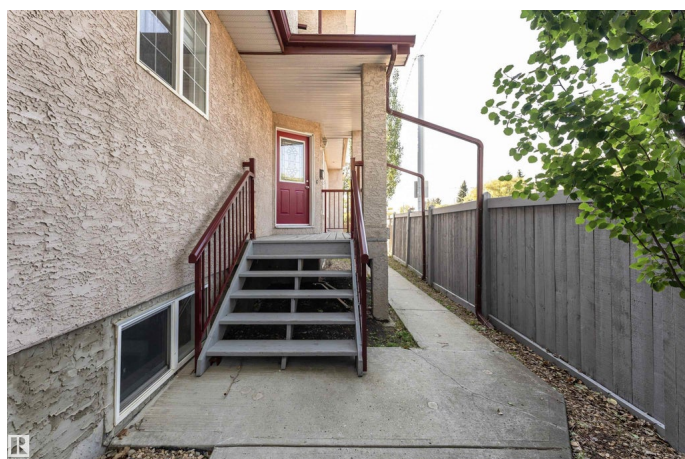
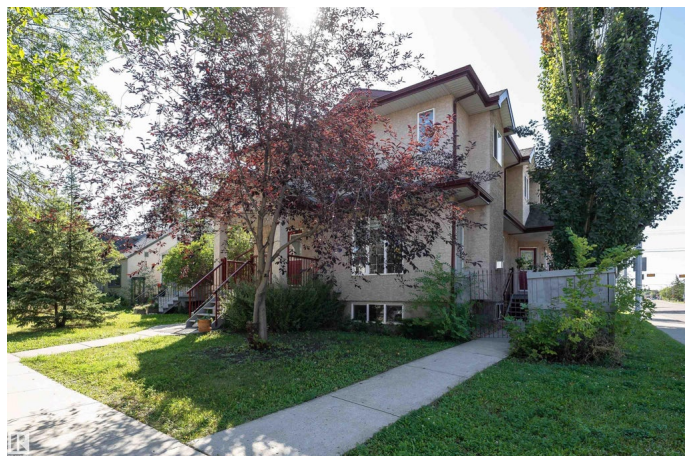
Allendale, Edmonton, AB

This immaculate Half Duplex home is located in Allendale. Offering 1556 sq ft of above-grade living space, featuring 3 bedrooms, 2.5 bathrooms, and a Single detached garage. A spacious entryway leads to the bright living room. The open concept floor plan gives direct access to the kitchen featuring granite countertops, brand-new stainless-steel appliances, and plenty of cupboard space. A 2 pc bath completes the main floor. Upstairs has 3 generously sized bedrooms and a 4 pc shared bath. The master bedroom boasts a walk-in closet and a 4 pc ensuite bath. Unfinished basement with a separate entrance offers endless possibilities for customization. Close to schools, shopping, and all amenities, with quick access to Whitemud Dr. Recent updates: new luxury vinyl plank, carpet, paint throughout, stair railing, blackout window coverings, and newly painted exterior handrails.

Built in 2007

Essential Information

MLS® #	E4457148
Price	\$499,900
Bedrooms	3
Bathrooms	2.50
Full Baths	2



Half Baths	1
Square Footage	1,556
Acres	0.00
Year Built	2007
Type	Single Family
Sub-Type	Half Duplex
Style	2 Storey
Status	Active

Community Information

Address	6511 109 Street
Area	Edmonton
Subdivision	Allendale
City	Edmonton
County	ALBERTA
Province	AB
Postal Code	T6H 3B5

Amenities

Amenities	Detectors Smoke
Parking	Single Garage Detached

Interior

Interior Features	ensuite bathroom
Appliances	Dishwasher-Built-In, Dryer, Hood Fan, Refrigerator, Stove-Electric, Washer, Window Coverings
Heating	Forced Air-1, Natural Gas
Stories	2
Has Basement	Yes
Basement	Full, Unfinished

Exterior

Exterior	Wood, Stucco
Exterior Features	Fenced, Landscaped, Playground Nearby, Public Transportation, Schools, Shopping Nearby
Roof	Asphalt Shingles
Construction	Wood, Stucco
Foundation	Concrete Perimeter

Additional Information

Date Listed September 10th, 2025

Days on Market 1

Zoning Zone 15

DATA IS DEEMED RELIABLE BUT IS NOT GUARANTEED ACCURATE BY THE REALTORS® ASSOCIATION OF EDMONTON. COPYRIGHT 2025 BY THE REALTORS® ASSOCIATION OF EDMONTON. ALL RIGHTS RESERVED. Trademarks are owned or controlled by the Canadian Real Estate Association (CREA) and identify real estate professionals who are members of CREA (REALTOR®, REALTORS®) and/or the quality of services they provide (MLS®, Multiple Listing Service®)

Listing information last updated on September 11th, 2025 at 2:32pm MDT