

\$719,900 - 9 Empire Court, St. Albert

MLS® #E4457063

\$719,900

4 Bedroom, 3.00 Bathroom, 1,868 sqft

Single Family on 0.00 Acres

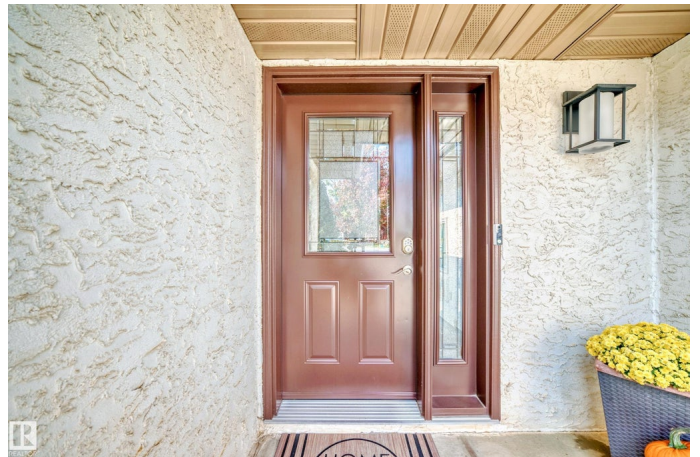
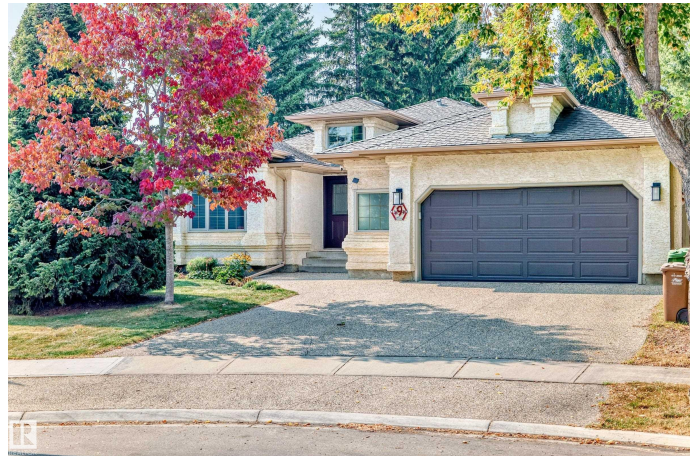
Erin Ridge, St. Albert, AB

Beautifully updated 1,862sqft bungalow with a PRIVATE setting in Erin Ridge. This striking home rests at the heart of a cul-de-sac. Inside, pride of ownership shines with extensive upgrades including a fully redone kitchen (2014) with GRANITE counters and S/S appliances plus gas range. The main level highlights a sunken living room with HARDWOOD FLOORING, a formal dining area and a family room just off the kitchen. Three bedrooms upstairs include a generous primary with ample closets and a bright ensuite. Both the ensuite and main bath were completely updated in 2017. The lower level was fully finished (2014) with a 4th bedroom and massive walk-in closet, spa-style bathroom with soaker tub, two-person shower and sauna, plus a large rec room with room for pool or theatre. Comfort is assured with new furnace (2023), hot water tank (2020) and A/C (2023). The private, tranquil yard completes this must-see home.

Built in 1990

Essential Information

MLS® #	E4457063
Price	\$719,900
Bedrooms	4
Bathrooms	3.00



Full Baths	3
Square Footage	1,868
Acres	0.00
Year Built	1990
Type	Single Family
Sub-Type	Detached Single Family
Style	Bungalow
Status	Active

Community Information

Address	9 Empire Court
Area	St. Albert
Subdivision	Erin Ridge
City	St. Albert
County	ALBERTA
Province	AB
Postal Code	T8N 5X5

Amenities

Amenities	Air Conditioner, Deck, Detectors Smoke, Exterior Walls- 2"x6", Hot Wtr Tank-Energy Star, Low Flw/Dual Flush Toilet, No Smoking Home, Vaulted Ceiling, Vinyl Windows
Parking Spaces	4
Parking	Double Garage Attached, Insulated, Over Sized

Interior

Interior Features	ensuite bathroom
Appliances	Air Conditioning-Central, Dishwasher-Built-In, Dryer, Garage Opener, Microwave Hood Fan, Refrigerator, Stove-Gas, Vacuum Systems, Washer, Window Coverings
Heating	Forced Air-1, Natural Gas
Fireplace	Yes
Fireplaces	Mantel
Stories	2
Has Basement	Yes
Basement	Full, Finished

Exterior

Exterior	Wood, Stucco
----------	--------------

Exterior Features	Backs Onto Park/Trees, Cul-De-Sac, Fenced, Flat Site, Fruit Trees/Shrubs, Landscaped, No Back Lane, No Through Road, Park/Reserve, Playground Nearby, Private Setting
Roof	Asphalt Shingles
Construction	Wood, Stucco
Foundation	Concrete Perimeter

Additional Information

Date Listed	September 10th, 2025
Days on Market	1
Zoning	Zone 24

DATA IS DEEMED RELIABLE BUT IS NOT GUARANTEED ACCURATE BY THE REALTORS® ASSOCIATION OF EDMONTON. COPYRIGHT 2025 BY THE REALTORS® ASSOCIATION OF EDMONTON. ALL RIGHTS RESERVED. Trademarks are owned or controlled by the Canadian Real Estate Association (CREA) and identify real estate professionals who are members of CREA (REALTOR®, REALTORS®) and/or the quality of services they provide (MLS®, Multiple Listing Service®)

Listing information last updated on September 11th, 2025 at 12:17am MDT