

\$499,800 - 25 Beaverbrook Crescent, St. Albert

MLS® #E4457005

\$499,800

4 Bedroom, 3.00 Bathroom, 1,533 sqft

Single Family on 0.00 Acres

Braeside, St. Albert, AB

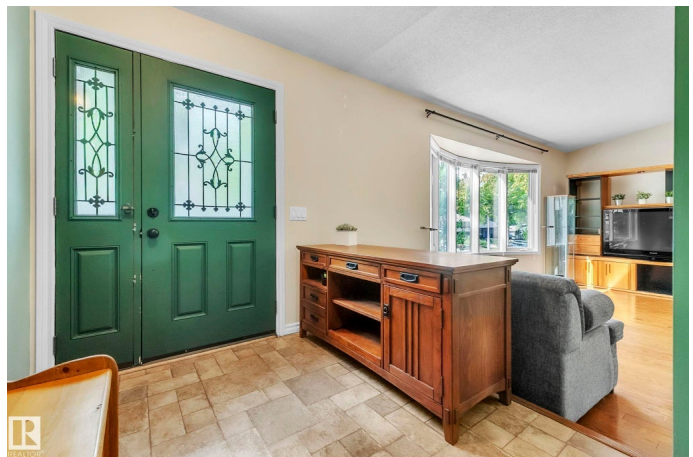
Stop the search - this Braeside beauty has it all! Tucked on a quiet crescent, this 1533 sq ft bungalow welcomes you with charm & space. The bright living room w/big windows flows to a spacious dining area & functional kitchen with newer appliances. Overlooking the breakfast nook & cozy family room, the kitchen makes entertaining easy. Imagine curling up by the brick fireplace or reaching for your favorite book on the custom built-ins with a "Beauty & the Beast" style ladder! 3 bedrooms are tucked nicely away, including a primary retreat with walk-in closet & ensuite w/soaker tub. The finished bsmt wows w/a massive rec space, bdrm, another full bath, laundry w/sink, renovated flex space & storage galore. Car lover? Hobbyist? The heated oversized garage is a dream, plus tons of other parking including space for RV. Outside, the private backyard is made for fun with a large deck, gazebo, 3-season sunroom & custom fountain. So many added bonuses throughout - A/C, vaulted ceilings, tasteful updates & more!

Built in 1976

Essential Information

MLS® # E4457005

Price \$499,800



Bedrooms	4
Bathrooms	3.00
Full Baths	3
Square Footage	1,533
Acres	0.00
Year Built	1976
Type	Single Family
Sub-Type	Detached Single Family
Style	Bungalow
Status	Active

Community Information

Address	25 Beaverbrook Crescent
Area	St. Albert
Subdivision	Braeside
City	St. Albert
County	ALBERTA
Province	AB
Postal Code	T8N 2L3

Amenities

Amenities	Air Conditioner, Deck, Front Porch, Sunroom
Parking Spaces	4
Parking	Double Garage Attached, Over Sized, RV Parking

Interior

Interior Features	ensuite bathroom
Appliances	Air Conditioning-Central, Dishwasher-Built-In, Dryer, Garage Control, Garage Opener, Microwave Hood Fan, Refrigerator, Storage Shed, Stove-Electric, Washer, Window Coverings, See Remarks, Garage Heater
Heating	Forced Air-1, Natural Gas
Fireplaces	Brick Facing, Mantel
Stories	2
Has Basement	Yes
Basement	Full, Finished

Exterior

Exterior	Wood, Brick
----------	-------------

Exterior Features	Fenced, Fruit Trees/Shrubs, Playground Nearby, Public Swimming Pool, Public Transportation, Schools, Shopping Nearby, See Remarks
Roof	Asphalt Shingles
Construction	Wood, Brick
Foundation	Concrete Perimeter

School Information

Elementary	Leo Nickerson, SAM
Middle	Lorne Akins, Fowler
High	SACHS, Paul Kane

Additional Information

Date Listed	September 9th, 2025
Days on Market	2
Zoning	Zone 24

DATA IS DEEMED RELIABLE BUT IS NOT GUARANTEED ACCURATE BY THE REALTORS® ASSOCIATION OF EDMONTON. COPYRIGHT 2025 BY THE REALTORS® ASSOCIATION OF EDMONTON. ALL RIGHTS RESERVED.Trademarks are owned or controlled by the Canadian Real Estate Association (CREA) and identify real estate professionals who are members of CREA (REALTOR®, REALTORS®) and/or the quality of services they provide (MLS®, Multiple Listing Service®)

Listing information last updated on September 11th, 2025 at 8:47am MDT