

## **\$514,900 - 428 Rainbow Crescent, Sherwood Park**

MLS® #E4455328

**\$514,900**

5 Bedroom, 3.00 Bathroom, 1,387 sqft

Single Family on 0.00 Acres

Regency Park (Sherwood Park), Sherwood Park, AB

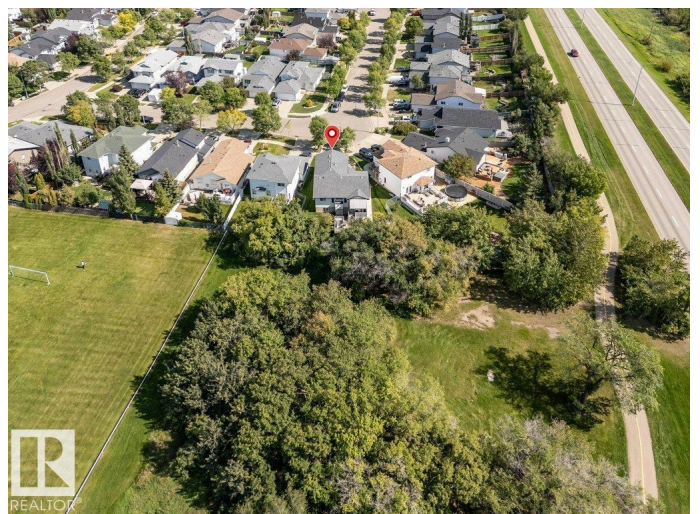
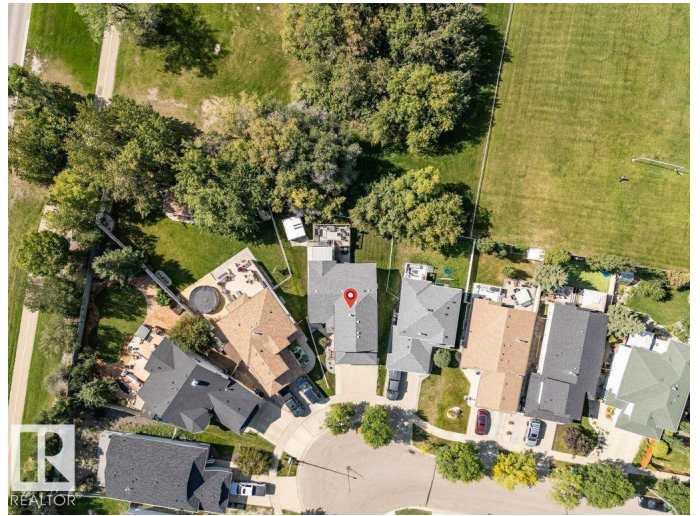
UNBEATABLE VALUE/IMMACULATE/AIR CONDITIONED!! Nothing to do here but move in. Furnace & A/C (2023), Hot Water tank (2024), Shingles (2014) Meticulously maintained by the same owners for 20+ years! 2500+ sqft of developed living space with 5 bedrooms, 3 Full bathrooms, an updated kitchen, white cabinetry, GRANITE countertops & stainless appliances, open to dining nook flooded in natural light, access to the attached 2 tier deck complete with awning, living room w/Gas fireplace, a beautiful formal dining room for all your family gatherings, the primary is perfectly positioned over the garage with walk in closet and ensuite with both soaker tub and glass shower, 2 other good sized bedroom on the main with shared access to a 4 piece bath, laundry completes this level. Lower level is finished with huge windows that eliminate that 'basement feel", 2 large bedrooms, a big family room, a full 3 piece bath and mechanical complete the lower level. Shows 10/10!

Built in 1998

### **Essential Information**

MLS® # E4455328

Price \$514,900



Bedrooms	5
Bathrooms	3.00
Full Baths	3
Square Footage	1,387
Acres	0.00
Year Built	1998
Type	Single Family
Sub-Type	Detached Single Family
Style	Bi-Level
Status	Active

### Community Information

Address	428 Rainbow Crescent
Area	Sherwood Park
Subdivision	Regency Park (Sherwood Park)
City	Sherwood Park
County	ALBERTA
Province	AB
Postal Code	T8A 5W4

### Amenities

Amenities	Air Conditioner, Deck, Vaulted Ceiling, Vinyl Windows
Parking	Double Garage Attached

### Interior

Interior Features	ensuite bathroom
Appliances	Air Conditioning-Central, Dishwasher-Built-In, Dryer, Microwave Hood Fan, Refrigerator, Stove-Electric, Washer, Window Coverings
Heating	Forced Air-1, Natural Gas
Stories	3
Has Basement	Yes
Basement	Full, Finished

### Exterior

Exterior	Wood, Vinyl
Exterior Features	Cul-De-Sac, Landscaped, Low Maintenance Landscape, Schools, Shopping Nearby
Roof	Asphalt Shingles
Construction	Wood, Vinyl

Foundation                      Concrete Perimeter

**Additional Information**

Date Listed                      August 29th, 2025

Days on Market                13

Zoning                            Zone 25

DATA IS DEEMED RELIABLE BUT IS NOT GUARANTEED ACCURATE BY THE REALTORS® ASSOCIATION OF EDMONTON. COPYRIGHT 2025 BY THE REALTORS® ASSOCIATION OF EDMONTON. ALL RIGHTS RESERVED.Trademarks are owned or controlled by the Canadian Real Estate Association (CREA) and identify real estate professionals who are members of CREA (REALTOR®, REALTORS®) and/or the quality of services they provide (MLS®, Multiple Listing Service®)

Listing information last updated on September 11th, 2025 at 12:03pm MDT