

Courtesy Of Che Taylor Of MaxWell Challenge Realty

## **\$339,900 - 3516 111 Avenue, Edmonton**

MLS® #E4454682

**\$339,900**

4 Bedroom, 1.50 Bathroom, 1,167 sqft  
Single Family on 0.00 Acres

Beverly Heights, Edmonton, AB

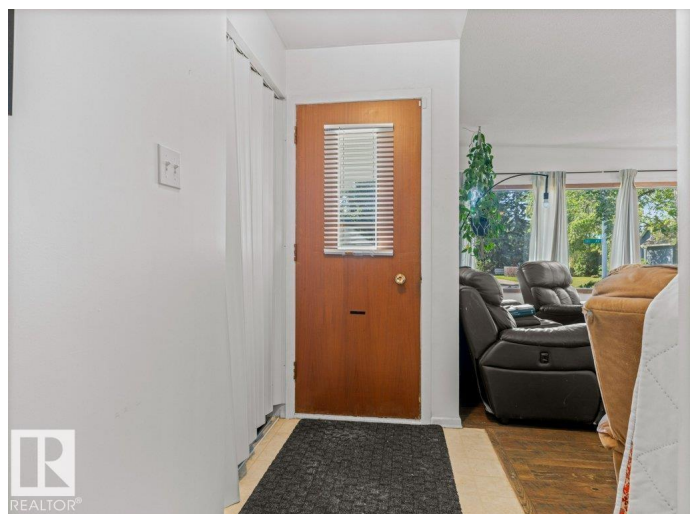
~ SOLID 3 + 1 BEDROOM BUNGALOW in BEVERLY HEIGHTS ~ LOCATED JUST A FEW BLOCKS TO ADA BLVD and the RIVER VALLEY ~ DOUBLE DETACHED GARAGE ~ LARGE CITY EASEMENT NEXT to the PROPERTY ~ Check out this excellent 4 bedroom, 1.5 bath bungalow located on a quiet street in Beverly. The home has been in the family for many years and is located beside a large city owned service lot easement that gives you tons of yard space for gatherings and outdoor enjoyment. The home features a large south facing living room, eat-in kitchen with lots of cabinets, 3 good sized bedrooms on the main floor including the primary bedroom with its own 2 piece bath. There is a large double detached garage in the backyard with rear alley access. The basement is partially finished with another bedroom and family room area. This would be a perfect home for young families or investors looking for a solid rental property. BRAND NEW FURNACE ~ FRESH PAINT ON MAIN FLOOR ~ WELL MAINTAINED PROPERTY.

Built in 1967

### **Essential Information**

MLS® # E4454682

Price \$339,900



Bedrooms	4
Bathrooms	1.50
Full Baths	1
Half Baths	1
Square Footage	1,167
Acres	0.00
Year Built	1967
Type	Single Family
Sub-Type	Detached Single Family
Style	Bungalow
Status	Active

### **Community Information**

Address	3516 111 Avenue
Area	Edmonton
Subdivision	Beverly Heights
City	Edmonton
County	ALBERTA
Province	AB
Postal Code	T5W 0J6

### **Amenities**

Amenities	Detectors Smoke, Hot Water Natural Gas, No Smoking Home, Television Connection
Parking	Double Garage Detached

### **Interior**

Interior Features	ensuite bathroom
Appliances	Dishwasher-Built-In, Dryer, Freezer, Garage Opener, Stove-Electric, Washer, Window Coverings, Refrigerators-Two, TV Wall Mount
Heating	Forced Air-1, Natural Gas
Stories	2
Has Basement	Yes
Basement	Full, Partially Finished

### **Exterior**

Exterior	Wood, Brick, Stucco
Exterior Features	Back Lane, Fenced, Flat Site, Golf Nearby, Landscaped, Playground Nearby, Public Transportation, Schools, Shopping Nearby

Roof	Asphalt Shingles
Construction	Wood, Brick, Stucco
Foundation	Concrete Perimeter

### **Additional Information**

Date Listed August 26th, 2025

Days on Market 16

Zoning Zone 23

DATA IS DEEMED RELIABLE BUT IS NOT GUARANTEED ACCURATE BY THE REALTORS® ASSOCIATION OF EDMONTON. COPYRIGHT 2025 BY THE REALTORS® ASSOCIATION OF EDMONTON. ALL RIGHTS RESERVED. Trademarks are owned or controlled by the Canadian Real Estate Association (CREA) and identify real estate professionals who are members of CREA (REALTOR®, REALTORS®) and/or the quality of services they provide (MLS®, Multiple Listing Service®)

Listing information last updated on September 11th, 2025 at 2:17pm MDT