

\$300,000 - 221 11080 Ellerslie Road, Edmonton

MLS® #E4449951

\$300,000

2 Bedroom, 2.00 Bathroom, 864 sqft

Condo / Townhouse on 0.00 Acres

Richford, Edmonton, AB

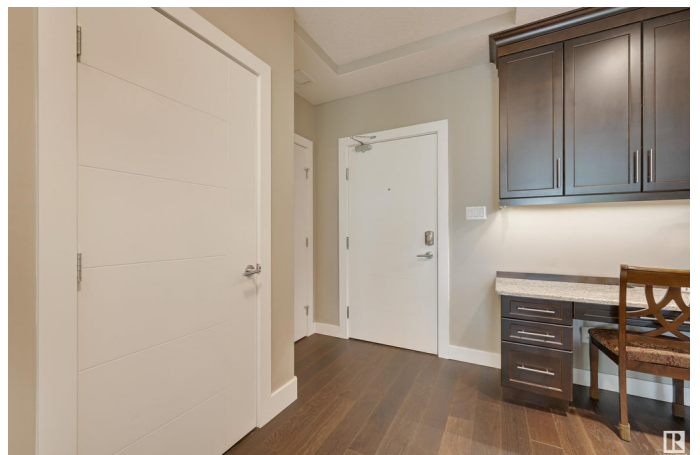
LIKE NEW! Stylish 2 Bed, 2 Bath Condo in the Eâ€™SCAPES Building. Welcome to upscale living in one of South Edmontonâ€™s most sought-after concrete buildings. This meticulously maintained 2nd-floor unit features a modern open-concept layout with engineered hardwood flooring, granite countertops, full-height cabinetry, high ceilings, & in-suite laundry. The kitchen includes a peninsula with bar seating, S/S appliances, & tons of cabinetry. The spacious primary bedroom offers a walk-through closet & a private 4-piece ensuite, while the second bedroom is ideally situated next to a full bathroomâ€™great for guests or a home office. Enjoy natural light through the large patio doors leading to a balcony surrounded by trees for added privacy. TWO titled heated underground parking stallsâ€™one conveniently located close to the elevator! Enjoy premium amenities: a fully equipped fitness centre, social lounge with pool table & TWO rooftop patios. Unbeatable locationâ€™shopping, dining, parks, trails, & quick to Henday.

Built in 2014

Essential Information

MLS® # E4449951

Price \$300,000



Bedrooms	2
Bathrooms	2.00
Full Baths	2
Square Footage	864
Acres	0.00
Year Built	2014
Type	Condo / Townhouse
Sub-Type	Lowrise Apartment
Style	Single Level Apartment
Status	Active

Community Information

Address	221 11080 Ellerslie Road
Area	Edmonton
Subdivision	Richford
City	Edmonton
County	ALBERTA
Province	AB
Postal Code	T6W 2C2

Amenities

Amenities	Air Conditioner, Ceiling 10 ft., Closet Organizers, Guest Suite, Recreation Room/Centre, Security Door, Social Rooms, Vinyl Windows, Storage Cage, Rooftop Deck/Patio
Parking Spaces	2
Parking	Heated, Parkade, Underground, See Remarks

Interior

Interior Features	ensuite bathroom
Appliances	Dishwasher-Built-In, Dryer, Microwave Hood Fan, Refrigerator, Stove-Electric, Washer, Window Coverings
Heating	Fan Coil, Natural Gas
# of Stories	6
Stories	1
Has Basement	Yes
Basement	None, No Basement

Exterior

Exterior	Concrete, Stucco
----------	------------------

Exterior Features	Golf Nearby, Playground Nearby, Public Transportation, Schools, Shopping Nearby
Roof	Flat
Construction	Concrete, Stucco
Foundation	Concrete Perimeter

Additional Information

Date Listed	July 26th, 2025
Days on Market	1
Zoning	Zone 55
Condo Fee	\$625

DATA IS DEEMED RELIABLE BUT IS NOT GUARANTEED ACCURATE BY THE REALTORS® ASSOCIATION OF EDMONTON. COPYRIGHT 2025 BY THE REALTORS® ASSOCIATION OF EDMONTON. ALL RIGHTS RESERVED.Trademarks are owned or controlled by the Canadian Real Estate Association (CREA) and identify real estate professionals who are members of CREA (REALTOR®, REALTORS®) and/or the quality of services they provide (MLS®, Multiple Listing Service®)

Listing information last updated on July 27th, 2025 at 3:47pm MDT