

\$419,900 - 14424 65 Street, Edmonton

MLS® #E4449913

\$419,900

3 Bedroom, 2.00 Bathroom, 1,045 sqft

Single Family on 0.00 Acres

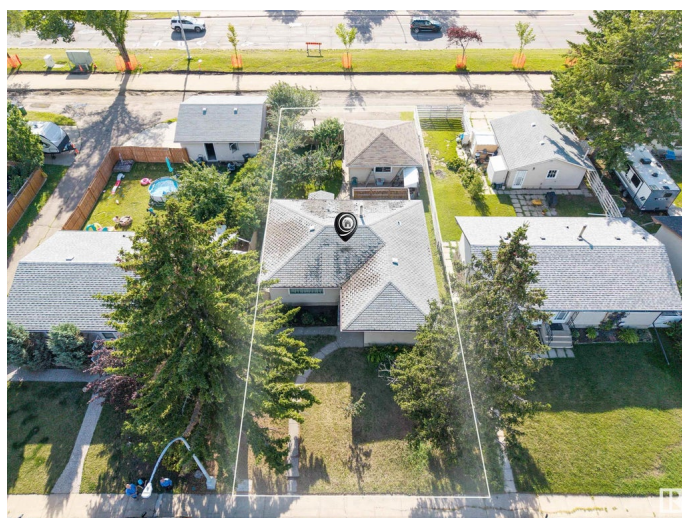
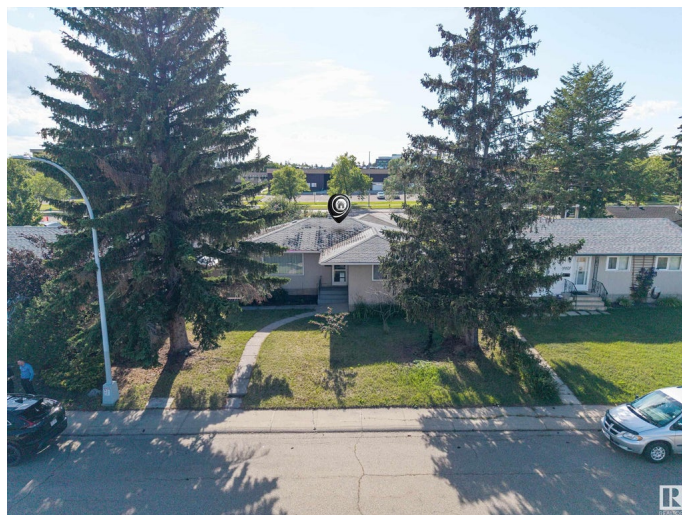
Mcleod, Edmonton, AB

Discover comfort and convenience with this stunning bungalow nestled on a quiet street. The home is situated steps away Londonderry Mall & the Leisure Centre as well as M.E. Lazerte High School. Featuring a large deck and a back yard with fruit trees, this home is ideal for outdoor enjoyment. Beat the summer heat with central AIR CONDITIONING, and enjoy cozy winters with a double detached garage—perfect for vehicles and storage. Have an RV? There's dedicated parking pad just for you! Upgrades include some newer windows, a high efficiency TRANE furnace, and a newer fridge. Three bedrooms and a bathroom complete the main level. The lower level is currently modelled into a recreation room, a cold room and a den along with a 3PC bath. Whether you're entertaining or enjoying a quiet evening, this home delivers on style, function, and modern living.

Built in 1967

Essential Information

MLS® #	E4449913
Price	\$419,900
Bedrooms	3
Bathrooms	2.00
Full Baths	2
Square Footage	1,045



Acres	0.00
Year Built	1967
Type	Single Family
Sub-Type	Detached Single Family
Style	Bungalow
Status	Active

Community Information

Address	14424 65 Street
Area	Edmonton
Subdivision	Mcleod
City	Edmonton
County	ALBERTA
Province	AB
Postal Code	T5A 2E7

Amenities

Amenities	Off Street Parking, On Street Parking, Air Conditioner, Deck, Hot Water Natural Gas, No Smoking Home, R.V. Storage, Vinyl Windows
Parking	Double Garage Detached

Interior

Appliances	Air Conditioning-Central, Dryer, Fan-Ceiling, Garage Control, Garage Opener, Hood Fan, Household Goods Included, Refrigerator, Storage Shed, Stove-Electric, Vacuum System Attachments, Vacuum Systems, Washer, Window Coverings
Heating	Forced Air-1, Natural Gas
Stories	2
Has Basement	Yes
Basement	Full, Partially Finished

Exterior

Exterior	Wood, Stucco
Exterior Features	Back Lane, Fenced, Fruit Trees/Shrubs, Landscaped, Paved Lane, Playground Nearby, Public Swimming Pool, Public Transportation, Schools, Shopping Nearby
Roof	Asphalt Shingles
Construction	Wood, Stucco
Foundation	Concrete Perimeter

School Information

High M.E. Lazerte

Additional Information

Date Listed July 26th, 2025

Days on Market 1

Zoning Zone 02

DATA IS DEEMED RELIABLE BUT IS NOT GUARANTEED ACCURATE BY THE REALTORS® ASSOCIATION OF EDMONTON. COPYRIGHT 2025 BY THE REALTORS® ASSOCIATION OF EDMONTON. ALL RIGHTS RESERVED. Trademarks are owned or controlled by the Canadian Real Estate Association (CREA) and identify real estate professionals who are members of CREA (REALTOR®, REALTORS®) and/or the quality of services they provide (MLS®, Multiple Listing Service®)

Listing information last updated on July 27th, 2025 at 4:02pm MDT