

## \$185,000 - 475 Dunluce Road, Edmonton

MLS® #E4449881

**\$185,000**

3 Bedroom, 1.50 Bathroom, 1,269 sqft

Condo / Townhouse on 0.00 Acres

Dunluce, Edmonton, AB

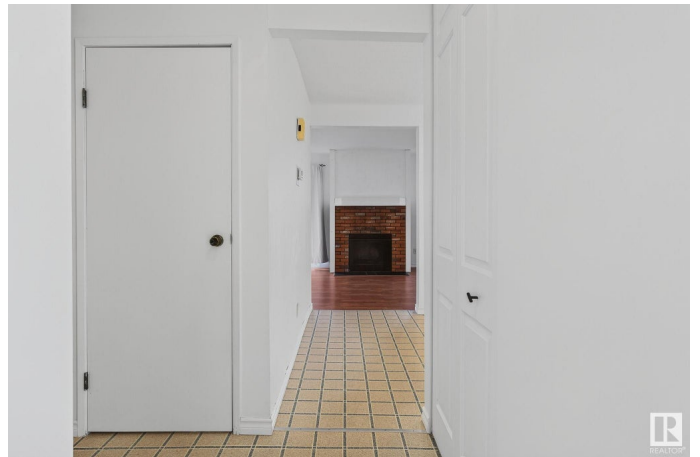
Welcome to Dunluce! This bright and spacious end-unit townhome offers the perfect blend of comfort, convenience, and community. Enjoy walking distance to Dunluce Park and Herb Link Park. Just minutes away, the Castle Downs Recreation Centre offers a full range of amenities, including a pool, skating rink, and fitness facilities. Everyday essentials are within easy reach with Beaumaris Mall, Cumberland Centre, and Griesbach Plaza nearby, plus convenient access to Sobeys, Save-On-Foods, Superstore, and more. Commuters will love the quick connections to major roadways and public transit, making travel throughout the city a breeze. Families will appreciate nearby schools like Dunluce Elementary and St. Lucy Catholic Elementary, along with the active Dunluce Community League, offering year-round programs and events. With entertainment options such as Cineplex Odeon, Woodlands Waterpark, and the Alberta Aviation Museum just a short drive away, this location truly has it all. Donâ€™t miss out!

Built in 1980

### Essential Information

MLS® # E4449881

Price \$185,000



Bedrooms	3
Bathrooms	1.50
Full Baths	1
Half Baths	1
Square Footage	1,269
Acres	0.00
Year Built	1980
Type	Condo / Townhouse
Sub-Type	Townhouse
Style	2 Storey
Status	Active

### Community Information

Address	475 Dunluce Road
Area	Edmonton
Subdivision	Dunluce
City	Edmonton
County	ALBERTA
Province	AB
Postal Code	T5X 4Y5

### Amenities

Amenities	On Street Parking, Deck, No Animal Home, No Smoking Home, Parking-Extra, Parking-Plug-Ins, Parking-Visitor
Parking	Stall

### Interior

Appliances	Dishwasher-Built-In, Dryer, Hood Fan, Refrigerator, Stove-Electric, Washer, Window Coverings
Heating	Forced Air-1, Natural Gas
Fireplace	Yes
Fireplaces	Woodstove
Stories	2
Has Basement	Yes
Basement	Full, Partially Finished

### Exterior

Exterior	Wood, Vinyl
Exterior Features	Fenced, Flat Site, Level Land, Low Maintenance Landscape,

	Park/Reserve, Playground Nearby, Public Transportation, Schools, Shopping Nearby
Roof	Asphalt Shingles
Construction	Wood, Vinyl
Foundation	Concrete Perimeter

### **Additional Information**

Date Listed	July 26th, 2025
Days on Market	1
Zoning	Zone 27
Condo Fee	\$422

DATA IS DEEMED RELIABLE BUT IS NOT GUARANTEED ACCURATE BY THE REALTORS® ASSOCIATION OF EDMONTON. COPYRIGHT 2025 BY THE REALTORS® ASSOCIATION OF EDMONTON. ALL RIGHTS RESERVED. Trademarks are owned or controlled by the Canadian Real Estate Association (CREA) and identify real estate professionals who are members of CREA (REALTOR®, REALTORS®) and/or the quality of services they provide (MLS®, Multiple Listing Service®)

Listing information last updated on July 27th, 2025 at 4:02pm MDT