

## **\$359,000 - 20 4850 Terwillegar Common, Edmonton**

MLS® #E4449879

**\$359,000**

3 Bedroom, 2.50 Bathroom, 1,235 sqft  
Condo / Townhouse on 0.00 Acres

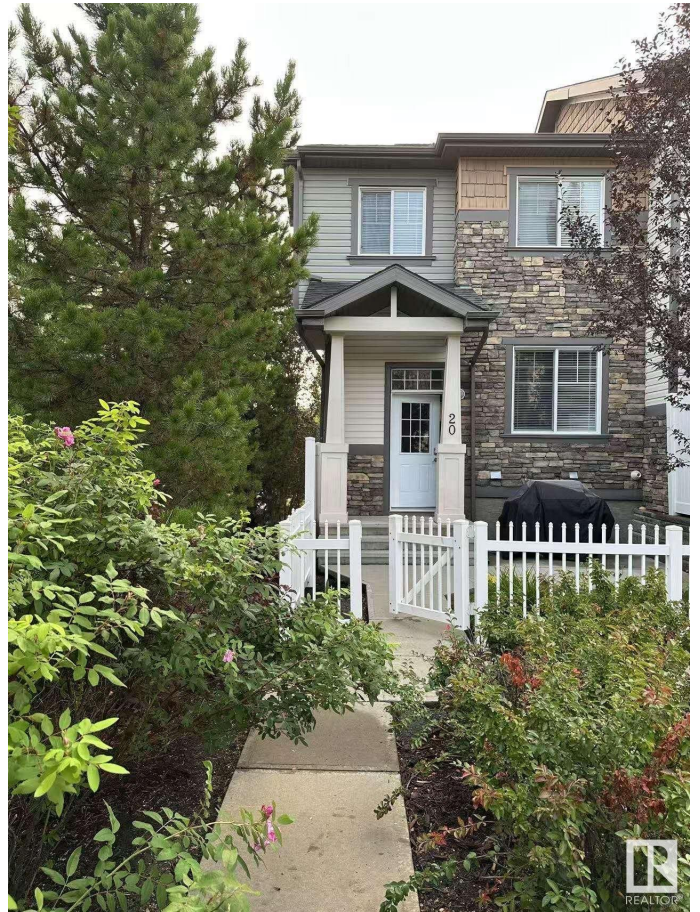
South Terwillegar, Edmonton, AB

Step through the serene garden courtyard and into this beautifully maintained end unit townhouse, nestled in one of most sought-after neighborhoods. From the moment you arrive, you'll feel like you've walked into a living masterpiece. Inside, the bright and spacious living room welcomes you with stunning views of the courtyard. The open-concept design flows seamlessly into the dining area and a modern kitchen featuring stainless steel appliances, quartz countertops, and a raised eating bar. Upstairs, you'll find a generous primary suite complete with a 3-piece ensuite and walk-in closet, along with two additional bedrooms and a full 4-piece bathroom. The ground level offers a convenient laundry and utility space, and grants direct access to the double attached garage. Freshly painted throughout with brand-new blinds, this home is truly move-in ready. Whether you're looking for your dream home or a smart investment opportunity, this gem is ready to impress.

Built in 2013

### **Essential Information**

MLS® #	E4449879
Price	\$359,000
Bedrooms	3



Bathrooms	2.50
Full Baths	2
Half Baths	1
Square Footage	1,235
Acres	0.00
Year Built	2013
Type	Condo / Townhouse
Sub-Type	Townhouse
Style	2 Storey
Status	Active

### Community Information

Address	20 4850 Terwillegar Common
Area	Edmonton
Subdivision	South Terwillegar
City	Edmonton
County	ALBERTA
Province	AB
Postal Code	T6R 0T6

### Amenities

Amenities	No Animal Home, No Smoking Home, Natural Gas BBQ Hookup
Parking	Double Garage Attached

### Interior

Interior Features	ensuite bathroom
Appliances	Dishwasher-Built-In, Dryer, Garage Opener, Microwave Hood Fan, Refrigerator, Stove-Electric, Washer, Window Coverings
Heating	Forced Air-1, Natural Gas
Stories	2
Has Basement	Yes
Basement	Partial, Unfinished

### Exterior

Exterior	Wood, Stone, Vinyl
Exterior Features	Fenced, Landscaped, Paved Lane, Public Transportation, Shopping Nearby
Roof	Asphalt Shingles
Construction	Wood, Stone, Vinyl

Foundation                      Concrete Perimeter

**Additional Information**

Date Listed                      July 26th, 2025  
Days on Market                47  
Zoning                              Zone 14  
HOA Fees                         138  
HOA Fees Freq.                Annually  
Condo Fee                        \$207



DATA IS DEEMED RELIABLE BUT IS NOT GUARANTEED ACCURATE BY THE REALTORS® ASSOCIATION OF EDMONTON. COPYRIGHT 2025 BY THE REALTORS® ASSOCIATION OF EDMONTON. ALL RIGHTS RESERVED.Trademarks are owned or controlled by the Canadian Real Estate Association (CREA) and identify real estate professionals who are members of CREA (REALTOR®, REALTORS®) and/or the quality of services they provide (MLS®, Multiple Listing Service®)  
Listing information last updated on September 11th, 2025 at 7:02pm MDT