

\$665,000 - 1130 Allendale Crescent, Sherwood Park

MLS® #E4449850

\$665,000

4 Bedroom, 2.50 Bathroom, 2,405 sqft

Single Family on 0.00 Acres

Aspen Trails, Sherwood Park, AB

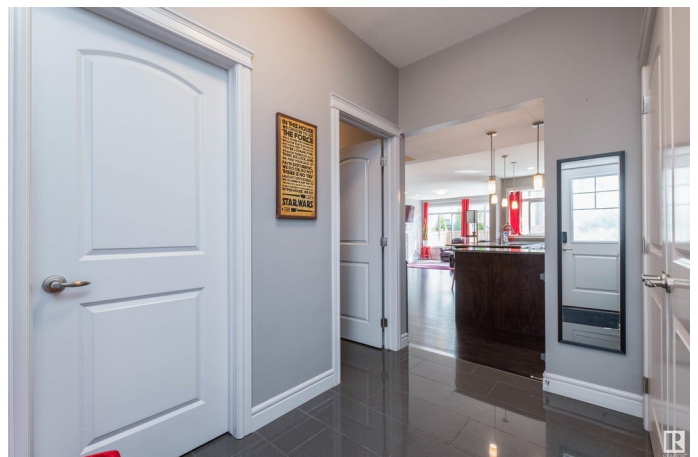
Discover this spacious and beautifully maintained air conditioned, 4 bdrm, 3 bath home nestled in a desirable family friendly neighborhood. Featuring a high quality, modern layout with hardwood floors throughout the main level, this home offers a bright and open atmosphere with a timeless neutral palette to suit any decor. The sleek, contemporary kitchen is equipped with stainless steel appliances, perfect for everyday living and entertaining. Enjoy the Flex space/Den with it's own sink. Upstairs, enjoy the added convenience of a laundry room and a cozy family room. The luxurious primary suite includes a large tiled ensuite and generous walk-in closet. Step outside from your deck or separate side entrance to a fully fenced, professionally landscaped backyard with a deck and flower beds - ideal for relaxing or hosting gatherings. Located just steps from scenic walking trails and minutes from schools, shops, and other amenities, this home combines comfort, style, and convenience in one stunning package!

Built in 2017

Essential Information

MLS® # E4449850

Price \$665,000



Bedrooms	4
Bathrooms	2.50
Full Baths	2
Half Baths	1
Square Footage	2,405
Acres	0.00
Year Built	2017
Type	Single Family
Sub-Type	Detached Single Family
Style	2 Storey
Status	Active

Community Information

Address	1130 Allendale Crescent
Area	Sherwood Park
Subdivision	Aspen Trails
City	Sherwood Park
County	ALBERTA
Province	AB
Postal Code	T8H 0X6

Amenities

Amenities	Deck
Parking	Double Garage Attached, Insulated

Interior

Interior Features	ensuite bathroom
Appliances	Dishwasher-Built-In, Dryer, Garage Control, Garage Opener, Microwave Hood Fan, Refrigerator, Stove-Electric, Washer, Window Coverings
Heating	Forced Air-1, Natural Gas
Fireplace	Yes
Fireplaces	Mantel, Stone Facing
Stories	2
Has Basement	Yes
Basement	Full, Unfinished

Exterior

Exterior	Wood, Stone, Vinyl
Exterior Features	Fenced, Landscaped, Playground Nearby, Public Swimming Pool, Public

	Transportation, Schools, Shopping Nearby
Roof	Asphalt Shingles
Construction	Wood, Stone, Vinyl
Foundation	Concrete Perimeter

Additional Information

Date Listed	July 25th, 2025
Days on Market	49
Zoning	Zone 25

DATA IS DEEMED RELIABLE BUT IS NOT GUARANTEED ACCURATE BY THE REALTORS® ASSOCIATION OF EDMONTON. COPYRIGHT 2025 BY THE REALTORS® ASSOCIATION OF EDMONTON. ALL RIGHTS RESERVED. Trademarks are owned or controlled by the Canadian Real Estate Association (CREA) and identify real estate professionals who are members of CREA (REALTOR®, REALTORS®) and/or the quality of services they provide (MLS®, Multiple Listing Service®)

Listing information last updated on September 12th, 2025 at 2:02am MDT