

\$429,900 - 8079 Chappelle Way, Edmonton

MLS® #E4449744

\$429,900

3 Bedroom, 2.50 Bathroom, 1,473 sqft

Single Family on 0.00 Acres

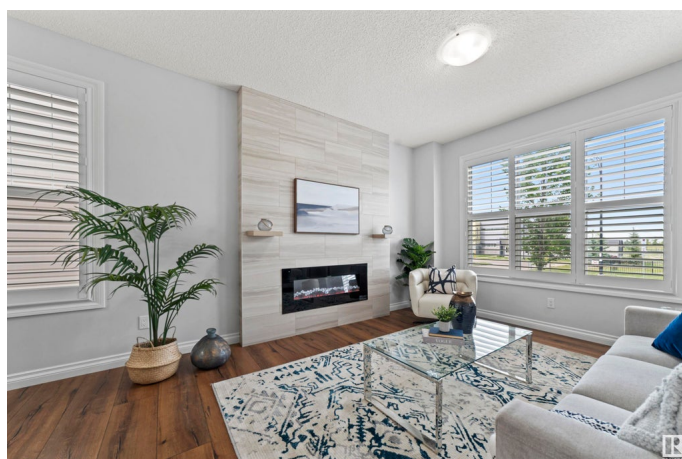
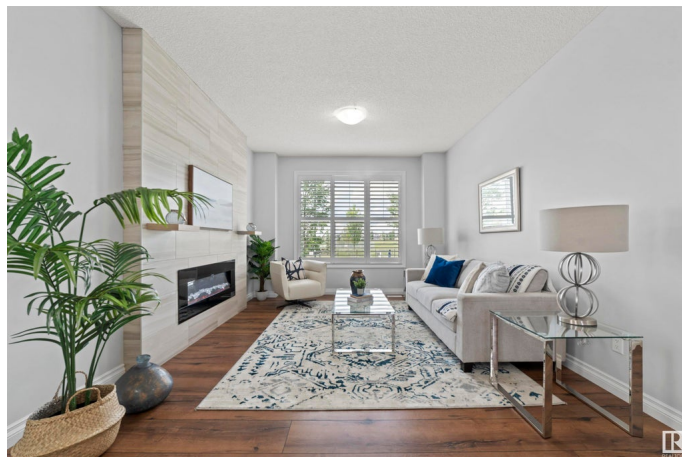
Chappelle Area, Edmonton, AB

Welcome to this stunning end-unit home in the family-friendly community of Chappelle â€” perfectly located right across from a school and close to parks, bus stops, and all amenities. This NO CONDO FEE property offers 3 bedrooms, 2.1 bathrooms, and a detached double car garage, making it an ideal choice for first-time buyers or savvy investors. The main floor boasts 9-ft ceilings, a bright and open layout, and a cozy electric fireplace for added charm. Enjoy a freshly painted interior, a modern kitchen with sleek appliances, 3 cm quartz countertops, and stylish high-end blinds throughout. With NO CARPET and upstairs laundry, every detail has been thoughtfully considered for comfort and function. Whether you're starting out or expanding your investment portfolio, this move-in-ready home offers the perfect balance of location, lifestyle, and long-term value.

Built in 2016

Essential Information

MLS® #	E4449744
Price	\$429,900
Bedrooms	3
Bathrooms	2.50
Full Baths	2
Half Baths	1



Square Footage	1,473
Acres	0.00
Year Built	2016
Type	Single Family
Sub-Type	Residential Attached
Style	2 Storey
Status	Active

Community Information

Address	8079 Chappelle Way
Area	Edmonton
Subdivision	Chappelle Area
City	Edmonton
County	ALBERTA
Province	AB
Postal Code	T6W 3L7

Amenities

Amenities	On Street Parking, Ceiling 9 ft., Detectors Smoke
Parking	Double Garage Detached

Interior

Interior Features	ensuite bathroom
Appliances	Dishwasher-Built-In, Dryer, Garage Control, Garage Opener, Microwave Hood Fan, Refrigerator, Stove-Electric, Washer, Window Coverings
Heating	Forced Air-1, Natural Gas
Fireplace	Yes
Fireplaces	Wall Mount
Stories	2
Has Basement	Yes
Basement	Full, Unfinished

Exterior

Exterior	Wood, Vinyl
Exterior Features	Airport Nearby, Fenced, Golf Nearby, Landscaped, Playground Nearby, Public Transportation, Schools, Shopping Nearby
Roof	Asphalt Shingles
Construction	Wood, Vinyl
Foundation	Concrete Perimeter

School Information

Elementary	DONALD R. GETTY SCHOOL
Middle	DONALD R. GETTY SCHOOL
High	DR. ANNE ANDERSON SCHOOL

Additional Information

Date Listed	July 25th, 2025
Days on Market	2
Zoning	Zone 55

DATA IS DEEMED RELIABLE BUT IS NOT GUARANTEED ACCURATE BY THE REALTORS® ASSOCIATION OF EDMONTON. COPYRIGHT 2025 BY THE REALTORS® ASSOCIATION OF EDMONTON. ALL RIGHTS RESERVED.Trademarks are owned or controlled by the Canadian Real Estate Association (CREA) and identify real estate professionals who are members of CREA (REALTOR®, REALTORS®) and/or the quality of services they provide (MLS®, Multiple Listing Service®)

Listing information last updated on July 27th, 2025 at 6:32pm MDT