

## \$400,000 - 414 200 Bethel Drive, Sherwood Park

MLS® #E4449666

**\$400,000**

2 Bedroom, 2.00 Bathroom, 1,285 sqft  
Condo / Townhouse on 0.00 Acres

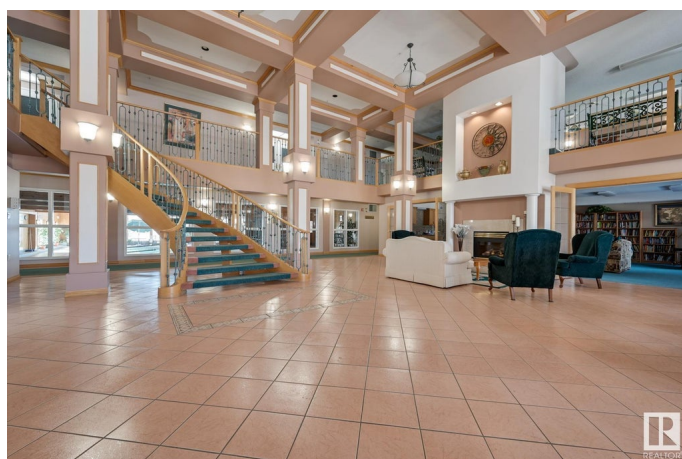
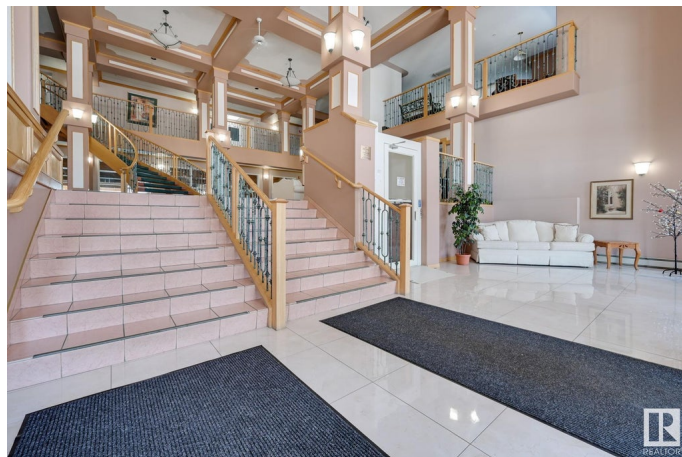
Strathcona Village, Sherwood Park, AB

Top-floor corner unit in the sought-after Sierra™s of Sherwood Park, a well-managed 55+ building loaded with amenities! This spacious condo is filled with natural light and offers a picturesque view, 9'™ ceilings, and durable ceramic tile flooring throughout—no carpet here! The kitchen features a large island, perfect for entertaining, and the living room is warmed by a cozy gas fireplace. The primary suite includes a walk-in closet with custom California Closet organizers, while the second bath boasts a rejuvenating steam shower. Step outside to a large, covered balcony with a natural gas BBQ hookup—ideal for year-round enjoyment. Enjoy access to an indoor pool and hot tub, fitness centre, 2 games rooms, media and craft rooms, woodworking shop, party room, and a heated underground parkade with car wash. Maintenance-free living at its best!

Built in 1999

### Essential Information

MLS® #	E4449666
Price	\$400,000
Bedrooms	2
Bathrooms	2.00
Full Baths	2



Square Footage	1,285
Acres	0.00
Year Built	1999
Type	Condo / Townhouse
Sub-Type	Lowrise Apartment
Style	Single Level Apartment
Status	Active

### Community Information

Address	414 200 Bethel Drive
Area	Sherwood Park
Subdivision	Strathcona Village
City	Sherwood Park
County	ALBERTA
Province	AB
Postal Code	T8H 2C5

### Amenities

Amenities	Detectors Smoke, Exercise Room, Guest Suite, Parking-Visitor, Pool-Indoor, Secured Parking, Security Door, Social Rooms, Sprinkler System-Fire
Parking	Stall
Has Pool	Yes

### Interior

Interior Features	ensuite bathroom
Appliances	Dishwasher-Built-In, Dryer, Oven-Microwave, Refrigerator, Stove-Electric, Washer, Window Coverings
Heating	Baseboard, Natural Gas
# of Stories	4
Stories	1
Has Basement	Yes
Basement	None, No Basement

### Exterior

Exterior	Wood, Brick, Stucco
Exterior Features	Backs Onto Park/Trees, Flat Site, Landscaped, Public Transportation, Shopping Nearby
Roof	Concrete Tiles

Construction	Wood, Brick, Stucco
Foundation	Concrete Perimeter

**Additional Information**

Date Listed	July 25th, 2025
Days on Market	3
Zoning	Zone 25
Condo Fee	\$935

DATA IS DEEMED RELIABLE BUT IS NOT GUARANTEED ACCURATE BY THE REALTORS® ASSOCIATION OF EDMONTON. COPYRIGHT 2025 BY THE REALTORS® ASSOCIATION OF EDMONTON. ALL RIGHTS RESERVED.Trademarks are owned or controlled by the Canadian Real Estate Association (CREA) and identify real estate professionals who are members of CREA (REALTOR®, REALTORS®) and/or the quality of services they provide (MLS®, Multiple Listing Service®)

Listing information last updated on July 27th, 2025 at 9:47pm MDT