

Courtesy Of Christina A Reid Of Century 21 Leading

\$719,900 - 3306 Roy Brown Way, Edmonton

MLS® #E4449610

\$719,900

4 Bedroom, 3.00 Bathroom, 2,214 sqft
Single Family on 0.00 Acres

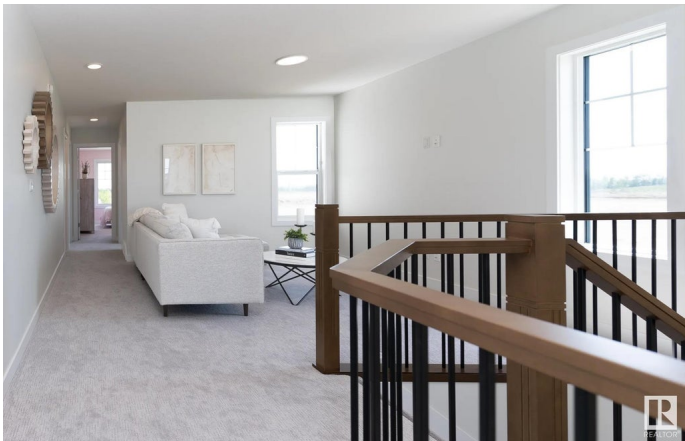
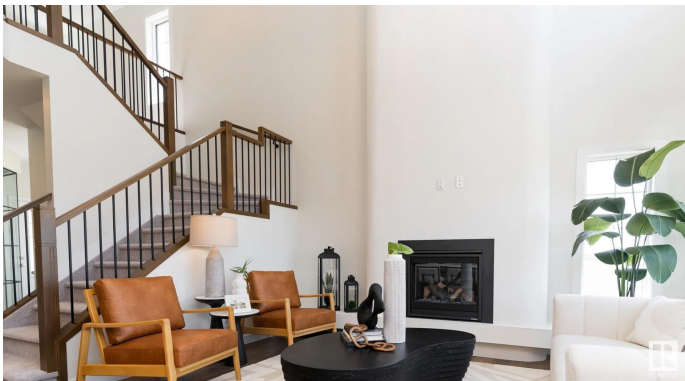
Griesbach, Edmonton, AB

Step into The Eiffel, a stunning 2,076 sq. ft. home designed for modern living. With 4 bedrooms, 3 bathrooms, side entry, and a variety of functional spaces, this home blends style and versatility effortlessly. The main floor features a main floor bedroom room, perfect for a home office, playroom, or additional living space. The open-to-above design in the great room creates a bright, airy atmosphere, enhancing the home’s spacious feel. The kitchen flows seamlessly into the dining and living areas, making it ideal for entertaining. Upstairs, a spacious bonus room offers additional relaxation space, while the primary suite boasts a luxurious ensuite and walk-in closet. Two additional bedrooms and a full bathroom complete the second floor, providing comfort for the whole family. Photos are of a showhome

Built in 2025

Essential Information

MLS® #	E4449610
Price	\$719,900
Bedrooms	4
Bathrooms	3.00
Full Baths	3
Square Footage	2,214
Acres	0.00



Year Built	2025
Type	Single Family
Sub-Type	Detached Single Family
Style	2 Storey
Status	Active

Community Information

Address	3306 Roy Brown Way
Area	Edmonton
Subdivision	Griesbach
City	Edmonton
County	ALBERTA
Province	AB
Postal Code	T5E 6Z9

Amenities

Amenities	Carbon Monoxide Detectors, Deck, Detectors Smoke, Hot Water Tankless, Smart/Program. Thermostat, HRV System
Parking	Double Garage Attached, Over Sized

Interior

Interior Features	ensuite bathroom
Appliances	Dishwasher-Built-In, Dryer, Garage Control, Garage Opener, Refrigerator, Stove-Electric, Washer
Heating	Forced Air-1, Natural Gas
Fireplace	Yes
Fireplaces	Insert
Stories	2
Has Basement	Yes
Basement	Full, Unfinished

Exterior

Exterior	Prefab, Vinyl
Exterior Features	Fenced, Golf Nearby, Landscaped, Playground Nearby, Public Transportation, Schools, Shopping Nearby
Roof	Asphalt Shingles
Construction	Prefab, Vinyl
Foundation	Concrete Perimeter

School Information

Elementary	MAJOR-GENERAL GRIESBACH
Middle	St. Edmund Catholic
High	QUEEN ELIZABETH

Additional Information

Date Listed	July 23rd, 2025
Days on Market	50
Zoning	Zone 27

DATA IS DEEMED RELIABLE BUT IS NOT GUARANTEED ACCURATE BY THE REALTORS® ASSOCIATION OF EDMONTON. COPYRIGHT 2025 BY THE REALTORS® ASSOCIATION OF EDMONTON. ALL RIGHTS RESERVED.Trademarks are owned or controlled by the Canadian Real Estate Association (CREA) and identify real estate professionals who are members of CREA (REALTOR®, REALTORS®) and/or the quality of services they provide (MLS®, Multiple Listing Service®)

Listing information last updated on September 11th, 2025 at 9:47am MDT