

Courtesy Of Christina A Reid Of Century 21 Leading

# \$669,900 - 2504 158 Street, Edmonton

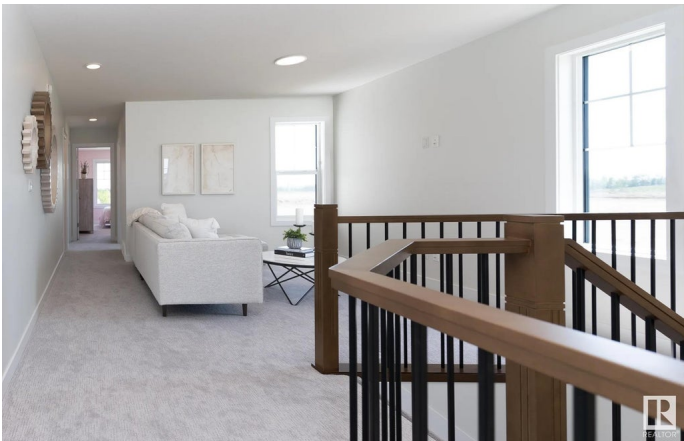
MLS® #E4449608

**\$669,900**

4 Bedroom, 3.00 Bathroom, 2,076 sqft  
Single Family on 0.00 Acres

Glenridding Ravine, Edmonton, AB

Welcome to The Eiffel – Where Modern Living Meets Timeless Style! This stunning 2,076 sq. ft. precision-built home is crafted for today’s lifestyle and tomorrow’s value. With 4 bedrooms, 3 full bathrooms, and a versatile side-entry, this home is perfect for multi-generational families, home-based businesses, or anyone seeking both space and flexibility. Step inside to discover a thoughtfully designed main floor bedroom and full bath, ideal for a home office, guest suite, or private workspace. The heart of the home is the breathtaking open-to-above great room, filling the space with natural light and creating an inviting, airy atmosphere. The chef-inspired kitchen seamlessly connects to the dining and living areas, making it a dream for entertaining. Upstairs, enjoy a spacious bonus room – perfect for movie nights or kids’ play space – and a serene primary retreat complete with a luxurious ensuite and walk-in closet. Photos are of a showhome



Built in 2025

## Essential Information

|           |           |
|-----------|-----------|
| MLS® #    | E4449608  |
| Price     | \$669,900 |
| Bedrooms  | 4         |
| Bathrooms | 3.00      |

|                |                        |
|----------------|------------------------|
| Full Baths     | 3                      |
| Square Footage | 2,076                  |
| Acres          | 0.00                   |
| Year Built     | 2025                   |
| Type           | Single Family          |
| Sub-Type       | Detached Single Family |
| Style          | 2 Storey               |
| Status         | Active                 |

### Community Information

|             |                    |
|-------------|--------------------|
| Address     | 2504 158 Street    |
| Area        | Edmonton           |
| Subdivision | Glenridding Ravine |
| City        | Edmonton           |
| County      | ALBERTA            |
| Province    | AB                 |
| Postal Code | T6W 5P6            |

### Amenities

|           |   |
|-----------|---|
| Amenities | Carbon Monoxide Detectors, Detectors Smoke, Hot Water Tankless, Smart/Program. Thermostat, HRV System |
| Parking   | Double Garage Attached, Over Sized  |

### Interior

|                   |  |
|-------------------|--|
| Interior Features | ensuite bathroom   |
| Appliances        | Dishwasher - Energy Star, Dryer, Garage Control, Garage Opener, Refrigerator, Stove-Electric, Washer |
| Heating           | Forced Air-1, Natural Gas  |
| Fireplace         | Yes  |
| Fireplaces        | Insert   |
| Stories           | 2  |
| Has Basement      | Yes  |
| Basement          | Full, Unfinished   |

### Exterior

|                   |   |
|-------------------|---|
| Exterior          | Prefab, Vinyl   |
| Exterior Features | Airport Nearby, Golf Nearby, Playground Nearby, Public Transportation, Schools, Shopping Nearby |
| Roof              | Asphalt Shingles  |

|              |                    |
|--------------|--------------------|
| Construction | Prefab, Vinyl      |
| Foundation   | Concrete Perimeter |

**School Information**

|            |                |
|------------|----------------|
| Elementary | GEORGE H. LUCK |
| Middle     | RIVERBEND      |
| High       | STRATHCONA     |

**Additional Information**

|                |                 |
|----------------|-----------------|
| Date Listed    | July 23rd, 2025 |
| Days on Market | 8               |
| Zoning         | Zone 56         |

DATA IS DEEMED RELIABLE BUT IS NOT GUARANTEED ACCURATE BY THE REALTORS® ASSOCIATION OF EDMONTON. COPYRIGHT 2025 BY THE REALTORS® ASSOCIATION OF EDMONTON. ALL RIGHTS RESERVED.Trademarks are owned or controlled by the Canadian Real Estate Association (CREA) and identify real estate professionals who are members of CREA (REALTOR®, REALTORS®) and/or the quality of services they provide (MLS®, Multiple Listing Service®)

Listing information last updated on July 30th, 2025 at 10:17pm MDT