

\$299,900 - 806 10226 104 Street, Edmonton

MLS® #E4449571

\$299,900

2 Bedroom, 2.00 Bathroom, 843 sqft

Condo / Townhouse on 0.00 Acres

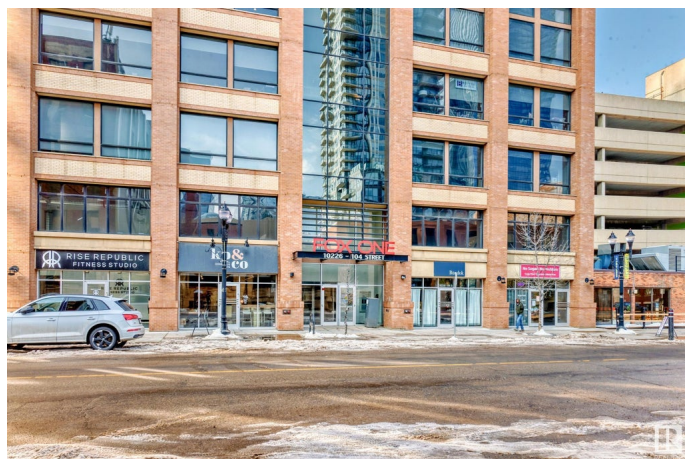
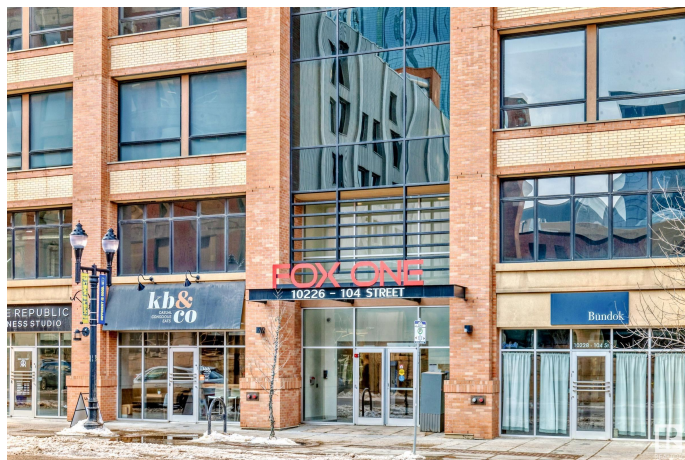
Downtown (Edmonton), Edmonton, AB

Experience this urban DOWNTOWN luxury at its finest! This modern 2 bedrooms, 2 bathrooms home greets you with stunning laminate floors throughout enhance the sophistication & elevate the allure of this unit! Open concept large living room offers large floor to ceiling windows & beautify downtown view. Spacious kitchen boasts SS appliances, granite countertops & an abundance of cabinets. Master bedroom offers a 4pc en-suite & walk-in closet. Enjoy large balcony for your summer BBQs. Plus, in-suite laundry & titled underground heated parking stall. Walking distance to the River Valley, Victoria Golf, Jasper Ave, Roger's Place, restaurants, cafes, transit, biking trails, & U of A is just across the river! Live in luxury & convenience, don't miss your chance to experience this exceptional urban living!

Built in 2014

Essential Information

MLS® #	E4449571
Price	\$299,900
Bedrooms	2
Bathrooms	2.00
Full Baths	2
Square Footage	843
Acres	0.00



Year Built	2014
Type	Condo / Townhouse
Sub-Type	Apartment High Rise
Style	Single Level Apartment
Status	Active

Community Information

Address	806 10226 104 Street
Area	Edmonton
Subdivision	Downtown (Edmonton)
City	Edmonton
County	ALBERTA
Province	AB
Postal Code	T5J 1B8

Amenities

Amenities	Detectors Smoke, Intercom, Parking-Visitor, Secured Parking, Security Door
Parking Spaces	1
Parking	Heated, Underground

Interior

Interior Features	ensuite bathroom
Appliances	Dishwasher-Built-In, Dryer, Microwave Hood Fan, Refrigerator, Stove-Electric, Washer
Heating	Baseboard, Hot Water, Natural Gas
# of Stories	28
Stories	1
Has Basement	Yes
Basement	None, No Basement

Exterior

Exterior	Concrete, Brick, Stone, Stucco
Exterior Features	Commercial, Public Transportation, Schools, Shopping Nearby, View Downtown
Roof	Flat
Construction	Concrete, Brick, Stone, Stucco
Foundation	Concrete Perimeter

School Information

High

McNally/Victoria School

Additional Information

Date Listed

July 24th, 2025

Days on Market

3

Zoning

Zone 12

Condo Fee

\$417

DATA IS DEEMED RELIABLE BUT IS NOT GUARANTEED ACCURATE BY THE REALTORS® ASSOCIATION OF EDMONTON. COPYRIGHT 2025 BY THE REALTORS® ASSOCIATION OF EDMONTON. ALL RIGHTS RESERVED.Trademarks are owned or controlled by the Canadian Real Estate Association (CREA) and identify real estate professionals who are members of CREA (REALTOR®, REALTORS®) and/or the quality of services they provide (MLS®, Multiple Listing Service®)

Listing information last updated on July 27th, 2025 at 6:32pm MDT