

## \$490,000 - 1330 George Close, Edmonton

MLS® #E4449381

**\$490,000**

3 Bedroom, 2.50 Bathroom, 1,418 sqft

Single Family on 0.00 Acres

Glastonbury, Edmonton, AB

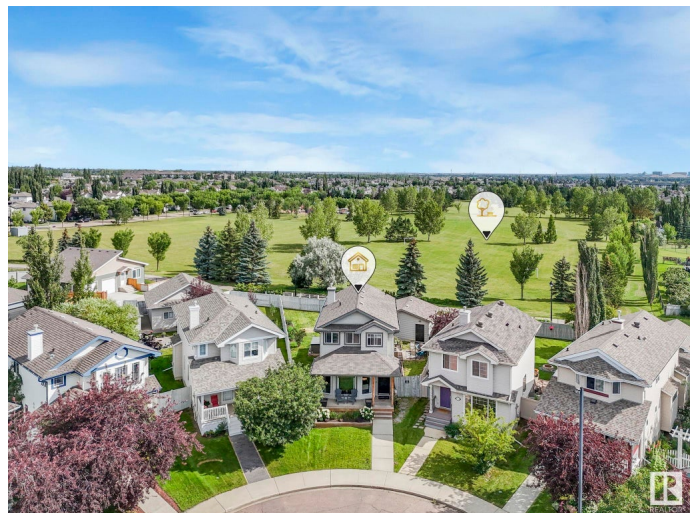
Tucked away on a quiet cul-de-sac and backing directly onto a scenic park, this beautifully decorated 2-bedroom, 2-bathroom home offers a perfect blend of style, comfort, & community. Inside, enjoy 2 oversized bedrooms with large windows that let in an abundance of natural light. Gleaming hardwood floors, tasteful decor, & a bright, open layout make this home both functional & inviting. The U-shaped kitchen is well-equipped with stainless steel appliances, plenty of cabinet and counter space, & opens to a spacious dining area. A stunning 6-ft high window offers picturesque views of your park-backed backyard. The main bathroom is a true showstopper-a luxurious retreat featuring imported Italian tile, a freestanding clawfoot tub, rain head shower, European fixtures, a pedestal sink, and a freestanding light-generated fireplace for ultimate relaxation. Step outside to your massive pie-shaped lot. The park hosts many fun, family-friendly community events! This rare gem combines location, design, & community!

Built in 2002

### Essential Information

MLS® # E4449381

Price \$490,000



Bedrooms	3
Bathrooms	2.50
Full Baths	2
Half Baths	1
Square Footage	1,418
Acres	0.00
Year Built	2002
Type	Single Family
Sub-Type	Detached Single Family
Style	2 Storey
Status	Active

### Community Information

Address	1330 George Close
Area	Edmonton
Subdivision	Glastonbury
City	Edmonton
County	ALBERTA
Province	AB
Postal Code	T5T 6S2

### Amenities

Amenities	R.V. Storage, See Remarks
Parking Spaces	4
Parking	Double Garage Detached, RV Parking

### Interior

Appliances	Garage Control, Garage Opener, Hood Fan, Refrigerator, Stove-Electric, Window Coverings, See Remarks, TV Wall Mount
Heating	Forced Air-1, Natural Gas
Fireplace	Yes
Fireplaces	Freestanding
Stories	3
Has Basement	Yes
Basement	Full, Finished

### Exterior

Exterior	Wood, Vinyl
Exterior Features	Backs Onto Park/Trees, Cul-De-Sac, Fenced, Flat Site, Landscaped,

Playground Nearby, Public Transportation, Schools, Shopping Nearby

Roof	Asphalt Shingles
Construction	Wood, Vinyl
Foundation	Concrete Perimeter

### School Information

Elementary	Kim Hung School
Middle	Kim Hung School
High	Jasper Place School

### Additional Information

Date Listed	July 24th, 2025
Days on Market	3
Zoning	Zone 58
HOA Fees	200
HOA Fees Freq.	Annually

DATA IS DEEMED RELIABLE BUT IS NOT GUARANTEED ACCURATE BY THE REALTORS® ASSOCIATION OF EDMONTON. COPYRIGHT 2025 BY THE REALTORS® ASSOCIATION OF EDMONTON. ALL RIGHTS RESERVED. Trademarks are owned or controlled by the Canadian Real Estate Association (CREA) and identify real estate professionals who are members of CREA (REALTOR®, REALTORS®) and/or the quality of services they provide (MLS®, Multiple Listing Service®)

Listing information last updated on July 27th, 2025 at 8:02pm MDT