

## \$375,000 - 11244 101 Street, Edmonton

MLS® #E4449320

**\$375,000**

0 Bedroom, 0.00 Bathroom,  
Single Family on 0.00 Acres

Spruce Avenue, Edmonton, AB

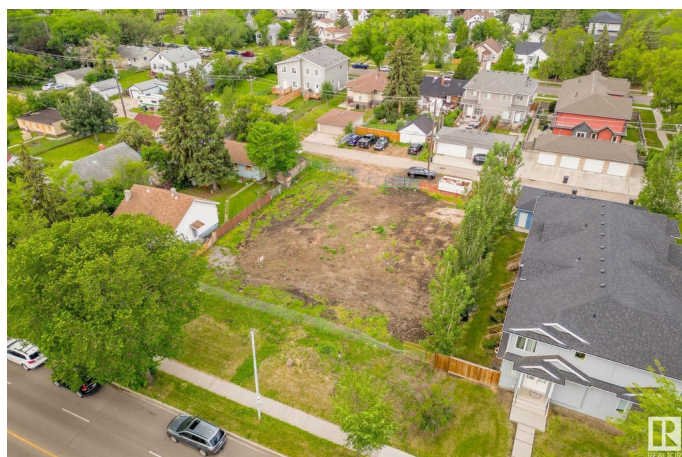
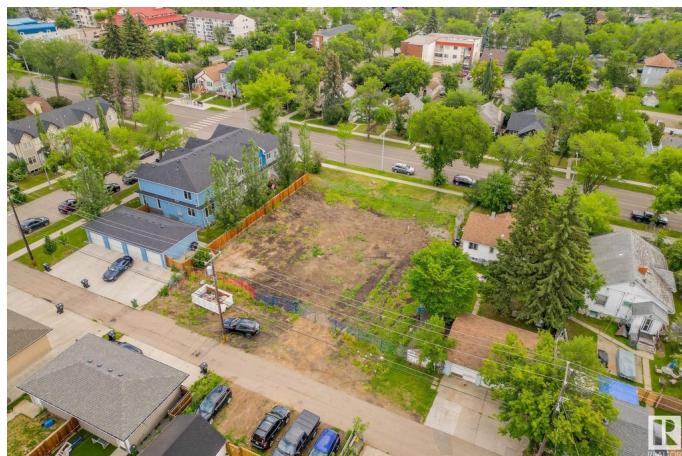
\*\*\*\*\* Large vacant LOT, 50 feet x 150 feet (15.2m x 45.7m).Â \*\* ExcellentÂ location.Â \*\* Education, healthcare & lifestyle are all a few minutes drive away.Â \*\* The adjacentÂ LOT (11240 101 St) is also for sale.Â \*\* 3-minute-drive to Royal Alexandra Hospital.Â \*\* 3-minute-drive to Gene Zwozdesky Centre at Norwood.Â \*\* 4-minute-drive to Kingsway Mall.Â \*\* 5-minute-drive to NAIT (Northern Alberta Institute of Technology).Â \*\* 7-minute-drive to MacEwan University.Â \*\* 7-minute-drive to Edmonton City Centre.Â \*\*\*\*\* The combined LOT, 100 feet x 150 feet, is a big and beautiful canvas for new creation!

### Essential Information

MLS® #	E4449320
Price	\$375,000
Bathrooms	0.00
Acres	0.00
Type	Single Family
Sub-Type	Vacant Lot/Land
Status	Active

### Community Information

Address	11244 101 Street
Area	Edmonton



Subdivision	Spruce Avenue
City	Edmonton
County	ALBERTA
Province	AB
Postal Code	T5G 2A5

## Exterior

Exterior Features   Flat Site, See Remarks

## Additional Information

Date Listed	July 24th, 2025
Days on Market	3
Zoning	Zone 08

DATA IS DEEMED RELIABLE BUT IS NOT GUARANTEED ACCURATE BY THE REALTORS® ASSOCIATION OF EDMONTON. COPYRIGHT 2025 BY THE REALTORS® ASSOCIATION OF EDMONTON. ALL RIGHTS RESERVED. Trademarks are owned or controlled by the Canadian Real Estate Association (CREA) and identify real estate professionals who are members of CREA (REALTOR®, REALTORS®) and/or the quality of services they provide (MLS®, Multiple Listing Service®)

Listing information last updated on July 27th, 2025 at 6:17pm MDT