

\$375,000 - 11240 101 Street, Edmonton

MLS® #E4449319

\$375,000

0 Bedroom, 0.00 Bathroom,
Single Family on 0.00 Acres

Spruce Avenue, Edmonton, AB

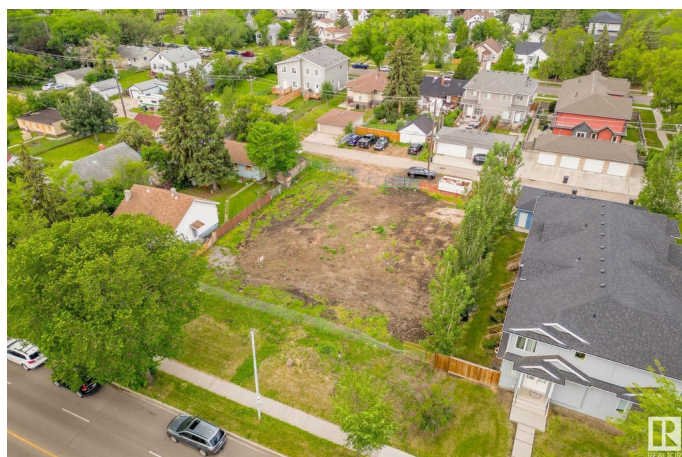
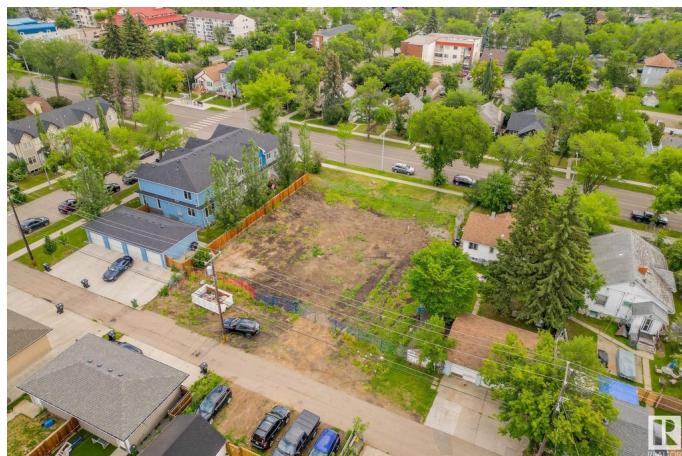
***** Large vacant LOT, 50 feet x 150 feet (15.2m x 45.7m).Â ** ExcellentÂ location.Â ** Education, healthcare & lifestyle are all a few minutes drive away.Â ** The adjacentÂ LOT (11244 101 St) is also for sale.Â ** 3-minute-drive to Royal Alexandra Hospital.Â ** 3-minute-drive to Gene Zwozdesky Centre at Norwood.Â ** 4-minute-drive to Kingsway Mall.Â ** 5-minute-drive to NAIT (Northern Alberta Institute of Technology).Â ** 7-minute-drive to MacEwan University.Â ** 7-minute-drive to Edmonton City Centre.Â ***** The combined LOT, 100 feet x 150 feet, is a big and beautiful canvas for new creation!

Essential Information

MLS® #	E4449319
Price	\$375,000
Bathrooms	0.00
Acres	0.00
Type	Single Family
Sub-Type	Vacant Lot/Land
Status	Active

Community Information

Address	11240 101 Street
Area	Edmonton



Subdivision	Spruce Avenue
City	Edmonton
County	ALBERTA
Province	AB
Postal Code	T5G 2A5

Exterior

Exterior Features Level Land, See Remarks

Additional Information

Date Listed	July 24th, 2025
Days on Market	3
Zoning	Zone 08

DATA IS DEEMED RELIABLE BUT IS NOT GUARANTEED ACCURATE BY THE REALTORS® ASSOCIATION OF EDMONTON. COPYRIGHT 2025 BY THE REALTORS® ASSOCIATION OF EDMONTON. ALL RIGHTS RESERVED. Trademarks are owned or controlled by the Canadian Real Estate Association (CREA) and identify real estate professionals who are members of CREA (REALTOR®, REALTORS®) and/or the quality of services they provide (MLS®, Multiple Listing Service®)

Listing information last updated on July 27th, 2025 at 6:17pm MDT