

\$315,000 - 435 1520 Hammond Gate Gate, Edmonton

MLS® #E4448954

\$315,000

2 Bedroom, 2.00 Bathroom, 1,432 sqft

Condo / Townhouse on 0.00 Acres

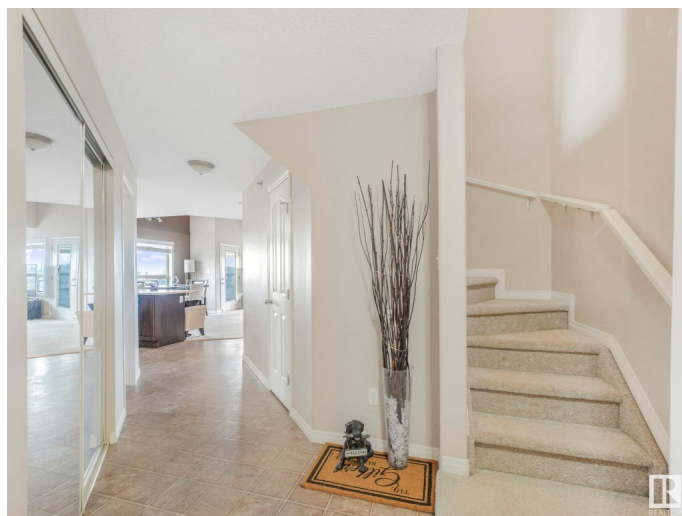
The Hamptons, Edmonton, AB

Welcome to this stunning top-floor, end-unit condo featuring 15-foot ceilings and a rare two-level loft layout! This beautifully upgraded home offers 2 spacious bedrooms, 2 full bathrooms, and a renovated kitchen with upgraded appliances, a breakfast bar, and plenty of cupboard space. The bright and airy open-concept living and dining area flows seamlessly onto a private balcony with an impressive view. Upstairs, you'll find a loft-style family room overlooking the main level – a rare find that adds extra living space and modern flair. Enjoy the comfort of 2 titled underground parking stalls, plus bonus income with one stall currently rented at \$120/month. With ample visitor parking and an executive-style layout, this home is truly one of a kind. Don't miss your chance to own this gorgeous, spacious, and unique condo – perfect for professionals, small families, or investors!

Built in 2008

Essential Information

| | |
|------------|-----------|
| MLS® # | E4448954 |
| Price | \$315,000 |
| Bedrooms | 2 |
| Bathrooms | 2.00 |
| Full Baths | 2 |



| | |
|----------------|-----------------------|
| Square Footage | 1,432 |
| Acres | 0.00 |
| Year Built | 2008 |
| Type | Condo / Townhouse |
| Sub-Type | Lowrise Apartment |
| Style | Multi Level Apartment |
| Status | Active |

Community Information

| | |
|-------------|----------------------------|
| Address | 435 1520 Hammond Gate Gate |
| Area | Edmonton |
| Subdivision | The Hamptons |
| City | Edmonton |
| County | ALBERTA |
| Province | AB |
| Postal Code | T6M 0J4 |

Amenities

| | |
|----------------|---|
| Amenities | No Animal Home, Parking-Extra, Parking-Visitor, Secured Parking, Security Door, See Remarks |
| Parking Spaces | 2 |
| Parking | Underground |
| Is Waterfront | Yes |

Interior

| | |
|-------------------|--|
| Interior Features | ensuite bathroom |
| Appliances | Dishwasher-Built-In, Dryer, Microwave Hood Fan, Refrigerator, Stove-Electric, Washer |
| Heating | In Floor Heat System, Natural Gas |
| # of Stories | 4 |
| Stories | 4 |
| Has Basement | Yes |
| Basement | None, No Basement |

Exterior

| | |
|-------------------|--|
| Exterior | Wood, Stone |
| Exterior Features | Creek, Golf Nearby, Landscaped, Picnic Area, Playground Nearby, Public Transportation, Schools, Shopping Nearby, View City |
| Roof | Asphalt Shingles |

| | |
|--------------|--------------------|
| Construction | Wood, Stone |
| Foundation | Concrete Perimeter |

School Information

| | |
|------------|-----------------------|
| Elementary | Bessie Nichols School |
| Middle | Jasper Place School |

Additional Information

| | |
|----------------|-----------------|
| Date Listed | July 21st, 2025 |
| Days on Market | 6 |
| Zoning | Zone 58 |
| Condo Fee | \$816 |

DATA IS DEEMED RELIABLE BUT IS NOT GUARANTEED ACCURATE BY THE REALTORS® ASSOCIATION OF EDMONTON. COPYRIGHT 2025 BY THE REALTORS® ASSOCIATION OF EDMONTON. ALL RIGHTS RESERVED.Trademarks are owned or controlled by the Canadian Real Estate Association (CREA) and identify real estate professionals who are members of CREA (REALTOR®, REALTORS®) and/or the quality of services they provide (MLS®, Multiple Listing Service®)

Listing information last updated on July 27th, 2025 at 8:47pm MDT