

Courtesy Of Edris A Azizi Of Capcity Realty Group

# \$129,900 - 207 12404 161 Avenue, Edmonton

MLS® #E4446758

**\$129,900**

2 Bedroom, 1.00 Bathroom, 816 sqft  
Condo / Townhouse on 0.00 Acres

Dunluce, Edmonton, AB

2 BEDROOM APARTMENT IN DUNLUCE HAS BEEN NEWLY RENOVATED! Ideally located close to all amenities including but not limited to: schools, daycares, shopping, transportation, main thoroughfares, & recreation centre, this property offers a great opportunity for a first time buyer or investor looking to capitalize on a very good rental potential. All appliances are brand new stainless steel.

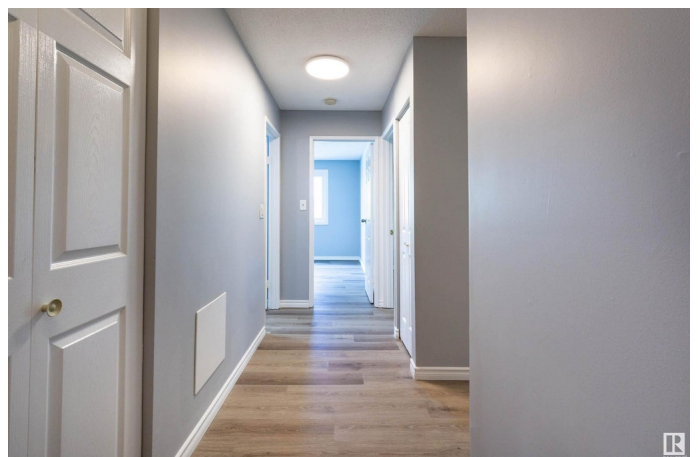
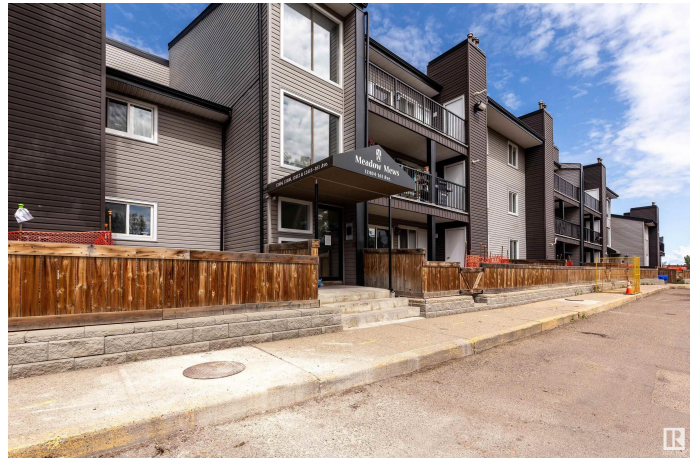
Built in 1979

## Essential Information

MLS® #	E4446758
Price	\$129,900
Bedrooms	2
Bathrooms	1.00
Full Baths	1
Square Footage	816
Acres	0.00
Year Built	1979
Type	Condo / Townhouse
Sub-Type	Lowrise Apartment
Style	Single Level Apartment
Status	Active

## Community Information

Address 207 12404 161 Avenue



Area	Edmonton
Subdivision	Dunluce
City	Edmonton
County	ALBERTA
Province	AB
Postal Code	T5X 4W6

### **Amenities**

Amenities	Detectors Smoke
Parking	Stall

### **Interior**

Appliances	Dishwasher-Built-In, Hood Fan, Refrigerator-Energy Star, Stove-Electric
Heating	Forced Air-1, Natural Gas
# of Stories	3
Stories	1
Has Basement	Yes
Basement	None, No Basement

### **Exterior**

Exterior	Wood, Vinyl
Exterior Features	Picnic Area, Playground Nearby, Public Swimming Pool, Public Transportation, Schools, Shopping Nearby
Roof	Asphalt Shingles
Construction	Wood, Vinyl
Foundation	Concrete Perimeter

### **Additional Information**

Date Listed	July 9th, 2025
Days on Market	64
Zoning	Zone 27
Condo Fee	\$535

DATA IS DEEMED RELIABLE BUT IS NOT GUARANTEED ACCURATE BY THE REALTORS® ASSOCIATION OF EDMONTON. COPYRIGHT 2025 BY THE REALTORS® ASSOCIATION OF EDMONTON. ALL RIGHTS RESERVED. Trademarks are owned or controlled by the Canadian Real Estate Association (CREA) and identify real estate professionals who are members of CREA (REALTOR®, REALTORS®) and/or the quality of services they provide (MLS®, Multiple Listing Service®)

Listing information last updated on September 11th, 2025 at 1:48pm MDT