

\$685,000 - 66 Edgefield Way, St. Albert

MLS® #E4441365

\$685,000

4 Bedroom, 2.50 Bathroom, 2,273 sqft

Single Family on 0.00 Acres

Erin Ridge North, St. Albert, AB

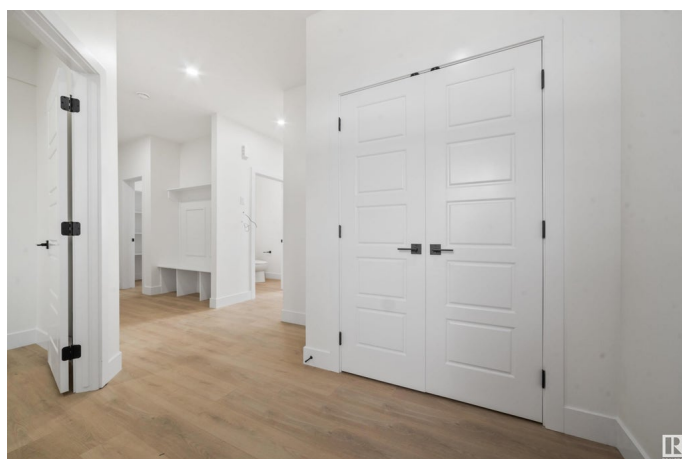
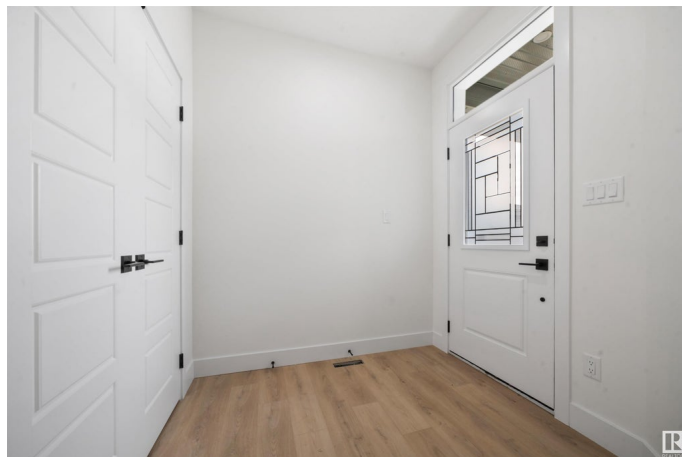
Welcome to 66 Edgefield Way, a stunning brand-new single-family home nestled in the highly sought-after community of Erin Ridge North in St. Albert. This 2,272 sq ft home offers 4 spacious bedrooms, 2.5 bathrooms, and a bright open-concept layout with soaring open-to-below ceilings and large windows that fill the space with natural light. The modern kitchen features elegant backsplash countertops, a large island, and a walk-through pantry that connects to the mudroom for added convenience. A cozy fireplace anchors the main living area, while a second fireplace adds warmth and charm to the upstairs bonus room. The primary suite includes a walk-in closet and a spa-like ensuite, creating the perfect retreat. The unfinished basement with a separate entrance offers excellent potential for a future legal suite. Complete with a rear deck and unbeatable access to parks, schools, walking trails, and a wide variety of restaurants, this home delivers the perfect blend of luxury, comfort, and everyday convenience.

Built in 2025

Essential Information

MLS® # E4441365

Price \$685,000



Bedrooms	4
Bathrooms	2.50
Full Baths	2
Half Baths	1
Square Footage	2,273
Acres	0.00
Year Built	2025
Type	Single Family
Sub-Type	Detached Single Family
Style	2 Storey
Status	Active

Community Information

Address	66 Edgefield Way
Area	St. Albert
Subdivision	Erin Ridge North
City	St. Albert
County	ALBERTA
Province	AB
Postal Code	T8N 7Z9

Amenities

Amenities	On Street Parking, Hot Water Natural Gas, No Animal Home, No Smoking Home
Parking	Double Garage Attached

Interior

Interior Features	ensuite bathroom
Appliances	Garage Control, See Remarks
Heating	Forced Air-1, Natural Gas
Fireplace	Yes
Fireplaces	Wall Mount
Stories	2
Has Basement	Yes
Basement	Full, Unfinished

Exterior

Exterior	Wood, Vinyl
Exterior Features	Back Lane, Golf Nearby, Playground Nearby, Schools, Shopping Nearby

Roof	Asphalt Shingles
Construction	Wood, Vinyl
Foundation	Concrete Perimeter

Additional Information

Date Listed	June 9th, 2025
Days on Market	5
Zoning	Zone 24

DATA IS DEEMED RELIABLE BUT IS NOT GUARANTEED ACCURATE BY THE REALTORS® ASSOCIATION OF EDMONTON. COPYRIGHT 2025 BY THE REALTORS® ASSOCIATION OF EDMONTON. ALL RIGHTS RESERVED.Trademarks are owned or controlled by the Canadian Real Estate Association (CREA) and identify real estate professionals who are members of CREA (REALTOR®, REALTORS®) and/or the quality of services they provide (MLS®, Multiple Listing Service®)

Listing information last updated on June 13th, 2025 at 11:32pm MDT