

\$459,900 - 5118 22 Avenue, Edmonton

MLS® #E4441207

\$459,900

4 Bedroom, 3.00 Bathroom, 1,490 sqft

Single Family on 0.00 Acres

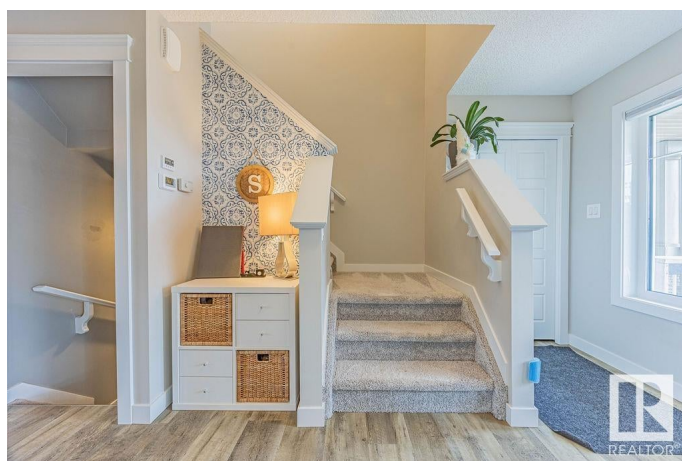
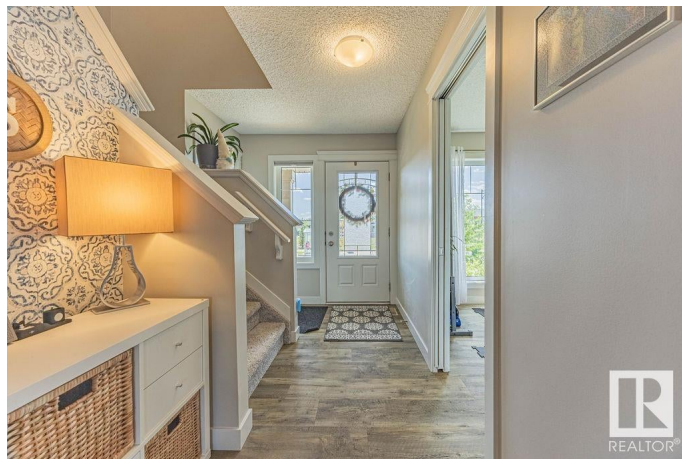
Walker, Edmonton, AB

Discover this charming 2-storey attached townhouse in the desirable community of Walker—NO CONDO FEES! Offering 3 bedrooms upstairs plus an additional bedroom in the fully finished basement, there's room for the whole family. The kitchen features sleek quartz countertops, perfect for cooking and entertaining. Stay cool all summer with central air conditioning and enjoy the durability and style of vinyl plank flooring. The main floor includes a front office/flex room, ideal for working from home or extra living space. A spacious double detached garage adds convenience and storage. Prime location near parks, schools, and shopping!

Built in 2018

Essential Information

| | |
|----------------|---------------|
| MLS® # | E4441207 |
| Price | \$459,900 |
| Bedrooms | 4 |
| Bathrooms | 3.00 |
| Full Baths | 2 |
| Half Baths | 2 |
| Square Footage | 1,490 |
| Acres | 0.00 |
| Year Built | 2018 |
| Type | Single Family |



| | |
|----------|----------------------|
| Sub-Type | Residential Attached |
| Style | 2 Storey |
| Status | Active |

Community Information

| | |
|-------------|----------------|
| Address | 5118 22 Avenue |
| Area | Edmonton |
| Subdivision | Walker |
| City | Edmonton |
| County | ALBERTA |
| Province | AB |
| Postal Code | T6X 2H7 |

Amenities

| | |
|-----------|------------------------|
| Amenities | Air Conditioner, Deck |
| Parking | Double Garage Detached |

Interior

| | |
|-------------------|--|
| Interior Features | ensuite bathroom |
| Appliances | Air Conditioning-Central, Dishwasher-Built-In, Dryer, Garage Control, Garage Opener, Microwave Hood Fan, Refrigerator, Washer, Window Coverings, Stove-Induction |
| Heating | Forced Air-1, Natural Gas |
| Stories | 3 |
| Has Basement | Yes |
| Basement | Full, Finished |

Exterior

| | |
|-------------------|------------------------------------|
| Exterior | Wood, Stone, Vinyl |
| Exterior Features | Back Lane, Fenced, Shopping Nearby |
| Roof | Asphalt Shingles |
| Construction | Wood, Stone, Vinyl |
| Foundation | Concrete Perimeter |

School Information

| | |
|------------|--------------------------|
| Elementary | Shauna May Seneca School |
| Middle | Shauna May Seneca School |

Additional Information

| | |
|-------------|----------------|
| Date Listed | June 8th, 2025 |
|-------------|----------------|

Days on Market 6

Zoning Zone 53

DATA IS DEEMED RELIABLE BUT IS NOT GUARANTEED ACCURATE BY THE REALTORS® ASSOCIATION OF EDMONTON. COPYRIGHT 2025 BY THE REALTORS® ASSOCIATION OF EDMONTON. ALL RIGHTS RESERVED. Trademarks are owned or controlled by the Canadian Real Estate Association (CREA) and identify real estate professionals who are members of CREA (REALTOR®, REALTORS®) and/or the quality of services they provide (MLS®, Multiple Listing Service®)

Listing information last updated on June 14th, 2025 at 6:02pm MDT