

## \$374,900 - 830 Mcleod Avenue, Spruce Grove

MLS® #E4440785

**\$374,900**

5 Bedroom, 3.50 Bathroom, 1,415 sqft  
Single Family on 0.00 Acres

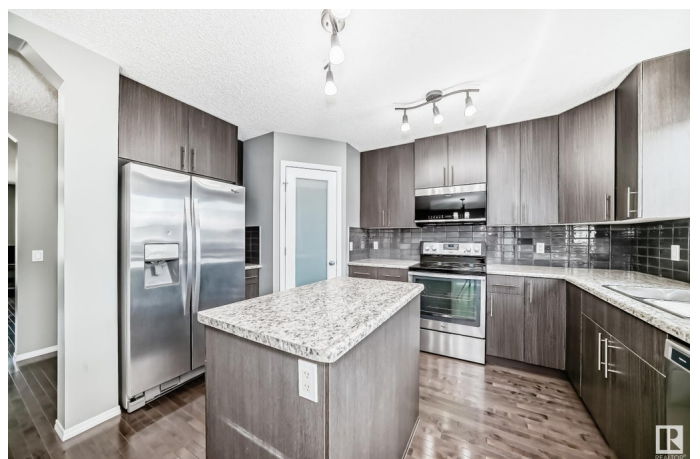
Lakewood\_SPGR, Spruce Grove, AB

Incredible End Unit â€” 5 Bedrooms, 4 Bathrooms & No Condo or HOA Fees!  
Welcome to this spacious and stylish end-unit townhouse offering over 2,000 sq ft of thoughtfully designed living space. With 5 bedrooms and 4 bathrooms, there's room for the whole familyâ€”and then some! Step inside to discover a modern island kitchen featuring a corner pantry and plenty of counter space, perfect for cooking and entertaining. The main floor boasts durable laminate flooring, which continues into the fully developed basement for a seamless look. Upstairs, you'll find three generously sized bedrooms, including a primary suite with a 4-piece ensuite and a walk-in closet. The finished basement adds two more bedrooms and a full bath, ideal for guests, a home office, or a growing family. Located within walking distance to restaurants, shopping, and all amenities, this move-in ready home offers both convenience and value.

Built in 2012

### Essential Information

MLS® #	E4440785
Price	\$374,900
Bedrooms	5
Bathrooms	3.50



Full Baths	3
Half Baths	1
Square Footage	1,415
Acres	0.00
Year Built	2012
Type	Single Family
Sub-Type	Residential Attached
Style	2 Storey
Status	Active

### Community Information

Address	830 Mcleod Avenue
Area	Spruce Grove
Subdivision	Lakewood_SPGR
City	Spruce Grove
County	ALBERTA
Province	AB
Postal Code	T7X 0M7

### Amenities

Amenities	On Street Parking, Deck, Detectors Smoke, No Animal Home, No Smoking Home
Parking	Double Garage Detached

### Interior

Interior Features	ensuite bathroom
Appliances	Dishwasher-Built-In, Dryer, Microwave Hood Fan, Refrigerator, Stove-Electric, Washer
Heating	Forced Air-1, Natural Gas
Stories	2
Has Basement	Yes
Basement	Full, Finished

### Exterior

Exterior	Wood, Vinyl
Exterior Features	Back Lane, Schools, Shopping Nearby
Roof	Asphalt Shingles
Construction	Wood, Vinyl
Foundation	Concrete Perimeter

**Additional Information**

Date Listed                June 6th, 2025  
Days on Market        8  
Zoning                    Zone 91

DATA IS DEEMED RELIABLE BUT IS NOT GUARANTEED ACCURATE BY THE REALTORS® ASSOCIATION OF EDMONTON. COPYRIGHT 2025 BY THE REALTORS® ASSOCIATION OF EDMONTON. ALL RIGHTS RESERVED.Trademarks are owned or controlled by the Canadian Real Estate Association (CREA) and identify real estate professionals who are members of CREA (REALTOR®, REALTORS®) and/or the quality of services they provide (MLS®, Multiple Listing Service®)  
Listing information last updated on June 14th, 2025 at 4:32pm MDT