

\$219,000 - 52 Belmead Gardens Gardens, Edmonton

MLS® #E4439727

\$219,000

3 Bedroom, 1.50 Bathroom, 1,066 sqft
Condo / Townhouse on 0.00 Acres

Belmead, Edmonton, AB

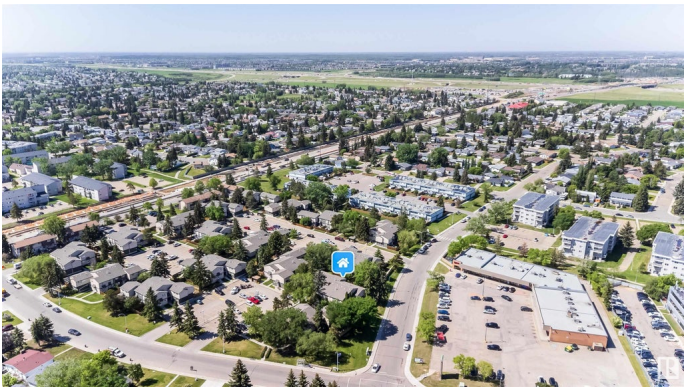
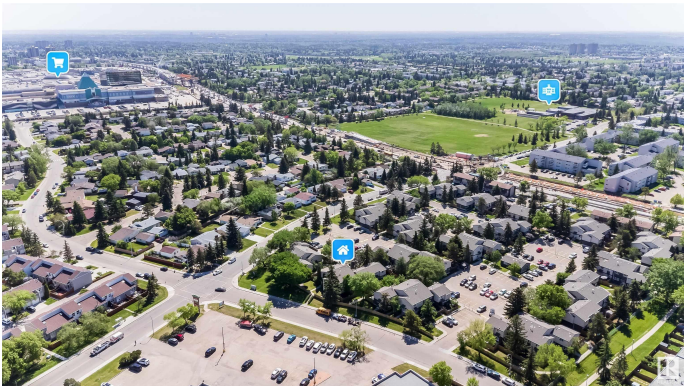
Spacious 3-bedroom townhome in sought-after Belmead, West Edmonton! Offering over 1000 sqft, this well-maintained home features laminate flooring on the main and cozy carpet upstairs. Includes 1.5 baths and a partially finished basement with an extra room for added space. Walking distance to WEM, near schools, public transit, and quick access to HWY 216. Perfect for first-time buyers or investors!

Built in 1975

Essential Information

MLS® #	E4439727
Price	\$219,000
Bedrooms	3
Bathrooms	1.50
Full Baths	1
Half Baths	1
Square Footage	1,066
Acres	0.00
Year Built	1975
Type	Condo / Townhouse
Sub-Type	Townhouse
Style	2 Storey
Status	Active

Community Information



Address	52 Belmead Gardens Gardens
Area	Edmonton
Subdivision	Belmead
City	Edmonton
County	ALBERTA
Province	AB
Postal Code	T5T 1J1

Amenities

Amenities	Detectors Smoke, No Animal Home, No Smoking Home
Parking	Stall

Interior

Appliances	Dryer, Refrigerator, Stove-Electric, Washer
Heating	Forced Air-1, Natural Gas
Stories	2
Has Basement	Yes
Basement	Full, Partially Finished

Exterior

Exterior	Wood, Stucco
Exterior Features	Fenced, Flat Site, Golf Nearby, Landscaped, Playground Nearby, Public Transportation, Schools, Shopping Nearby, See Remarks
Roof	Asphalt Shingles
Construction	Wood, Stucco
Foundation	Concrete Perimeter

Additional Information

Date Listed	May 31st, 2025
Days on Market	14
Zoning	Zone 20
Condo Fee	\$342

DATA IS DEEMED RELIABLE BUT IS NOT GUARANTEED ACCURATE BY THE REALTORS® ASSOCIATION OF EDMONTON. COPYRIGHT 2025 BY THE REALTORS® ASSOCIATION OF EDMONTON. ALL RIGHTS RESERVED. Trademarks are owned or controlled by the Canadian Real Estate Association (CREA) and identify real estate professionals who are members of CREA (REALTOR®, REALTORS®) and/or the quality of services they provide (MLS®, Multiple Listing Service®)

Listing information last updated on June 14th, 2025 at 7:17pm MDT