

# \$819,800 - 17 Birkshire Crescent, Sherwood Park

MLS® #E4439585

**\$819,800**

4 Bedroom, 3.00 Bathroom, 2,284 sqft

Single Family on 0.00 Acres

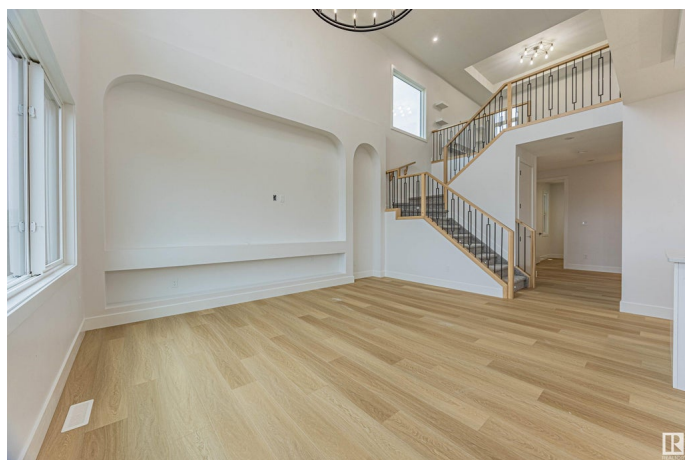
Hillshire, Sherwood Park, AB

Welcome to Hillshire, where modern elegance meets everyday comfort! This stunning 2,291 sq ft 2-storey home offers 4 spacious bedrooms, 3 baths, and a separate side entrance. The heart of the home is the open-concept main floor, featuring a sleek kitchen with a walk-through pantry and direct garage access—ideal for busy mornings and grocery hauls. The great room and dining area are tailor-made for hosting. Upstairs, unwind in your private primary retreat with a spa-inspired 5-piece ensuite and walk-in closet. A large central bonus room creates the perfect hangout, while the upstairs laundry with extra storage makes life easy. With a full appliance package ready to install and immediate possession available, this home blends style, space, and convenience in one unforgettable package. Don't miss your chance to live in one of Sherwood Park's most sought-after communities!

Built in 2025

## Essential Information

MLS® #	E4439585
Price	\$819,800
Bedrooms	4
Bathrooms	3.00
Full Baths	3



Square Footage	2,284
Acres	0.00
Year Built	2025
Type	Single Family
Sub-Type	Detached Single Family
Style	2 Storey
Status	Active

### **Community Information**

Address	17 Birkshire Crescent
Area	Sherwood Park
Subdivision	Hillshire
City	Sherwood Park
County	ALBERTA
Province	AB
Postal Code	T8B 0C6

### **Amenities**

Amenities	See Remarks
Parking	Double Garage Attached

### **Interior**

Interior Features	ensuite bathroom
Appliances	See Remarks
Heating	Forced Air-2, Natural Gas
Stories	2
Has Basement	Yes
Basement	Full, Unfinished

### **Exterior**

Exterior	Block, Asphalt, Stone, Hardie Board Siding
Exterior Features	Backs Onto Park/Trees, Schools, Private Park Access
Roof	Asphalt Shingles
Construction	Block, Asphalt, Stone, Hardie Board Siding
Foundation	Concrete Perimeter

### **Additional Information**

Date Listed	May 30th, 2025
Days on Market	16

## Zoning

## Zone 25

DATA IS DEEMED RELIABLE BUT IS NOT GUARANTEED ACCURATE BY THE REALTORS® ASSOCIATION OF EDMONTON. COPYRIGHT 2025 BY THE REALTORS® ASSOCIATION OF EDMONTON. ALL RIGHTS RESERVED. Trademarks are owned or controlled by the Canadian Real Estate Association (CREA) and identify real estate professionals who are members of CREA (REALTOR®, REALTORS®) and/or the quality of services they provide (MLS®, Multiple Listing Service®)

Listing information last updated on June 15th, 2025 at 4:47am MDT