

## \$139,900 - 14105 82 Street, Edmonton

MLS® #E4438608

**\$139,900**

2 Bedroom, 1.00 Bathroom, 947 sqft

Condo / Townhouse on 0.00 Acres

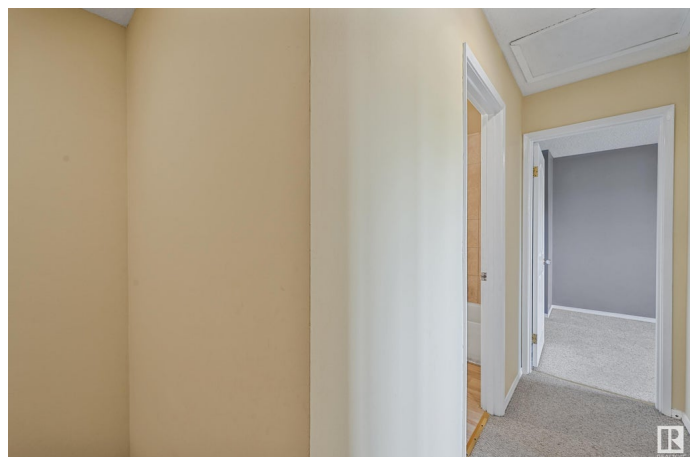
Kildare, Edmonton, AB

OWN THIS HOME CHEAPER THAN PAYING RENT! This HIDDEN GEM nestled in a WELL-MANAGED PET-FRIENDLY COMPLEX with TONS of UPGRADES! PRIDE OF OWNERSHIP SHOWS as this home has been METICULOUSLY maintained w/MANY UPGRADES throughout. Kitchen is STYLISH & FUNCTIONAL w/AMPLE COUNTERSPACE, PLENTY OF CABINETS. Family-sized dining area is open to the bright & SPACIOUS LIVING ROOM w/ample seating for all of your guests. Upstairs features LARGE MASTER BEDROOM, 2 bedroom was converted from 3 and can easily be converted back & an UPDATED FULL BATH. Basement is waiting your finishing touches. Relax in the FULLY FENCED West FACING YARD & enjoy the convenience. Newer kitchen cabinets, newer laminate, bathroom. Parking stall is #250

Built in 1971

### Essential Information

MLS® #	E4438608
Price	\$139,900
Bedrooms	2
Bathrooms	1.00
Full Baths	1
Square Footage	947



Acres	0.00
Year Built	1971
Type	Condo / Townhouse
Sub-Type	Townhouse
Style	2 Storey
Status	Active

### Community Information

Address	14105 82 Street
Area	Edmonton
Subdivision	Kildare
City	Edmonton
County	ALBERTA
Province	AB
Postal Code	T5E 2V7

### Amenities

Amenities	See Remarks
Parking	Stall

### Interior

Appliances	Dishwasher-Built-In, Dryer, Refrigerator, Stove-Electric, Washer
Heating	Forced Air-1, Natural Gas
Stories	2
Has Basement	Yes
Basement	Full, Partially Finished

### Exterior

Exterior	Wood, Vinyl
Exterior Features	See Remarks
Roof	Asphalt Shingles
Construction	Wood, Vinyl
Foundation	Concrete Perimeter

### Additional Information

Date Listed	May 26th, 2025
Days on Market	19
Zoning	Zone 02
Condo Fee	\$372

DATA IS DEEMED RELIABLE BUT IS NOT GUARANTEED ACCURATE BY THE REALTORS® ASSOCIATION OF EDMONTON. COPYRIGHT 2025 BY THE REALTORS® ASSOCIATION OF EDMONTON. ALL RIGHTS RESERVED. Trademarks are owned or controlled by the Canadian Real Estate Association (CREA) and identify real estate professionals who are members of CREA (REALTOR®, REALTORS®) and/or the quality of services they provide (MLS®, Multiple Listing Service®)

Listing information last updated on June 14th, 2025 at 5:17pm MDT