

Courtesy Of Joseph G Ingram Of RE/MAX River City

\$384,900 - 27-2710 66 Street, Edmonton

MLS® #E4436974

\$384,900

3 Bedroom, 2.50 Bathroom, 1,240 sqft
Condo / Townhouse on 0.00 Acres

The Orchards At Ellerslie, Edmonton, AB

Modern beautiful 3 bedroom, 3 bathroom home with Double attached garage in the heart of the Orchards area. Upon entering you will be greeted with 9' ceilings and LED lighting. The Kitchen is large with breakfast eating bar and Quartz counter. The stainless steel appliances are pleasure to cook with. Lots of counter space to prepare meals and enjoy. Flowing from the kitchen is the spacious living room with large windows. Followed by the dining area which you can access the deck from. Main floor powder room is great for guests. Upstairs you will find an excellent layout for the family. There is a massive master bedroom sanctuary with walk-in closet and large 4pc ensuite bathroom. Servicing the other 2 bedrooms is a 4pc full bathroom. The bedrooms are conveniently separated from the master by the large laundry room and bathroom. The open basement awaits your ideas and has legal sized window for future bedroom, roughed-in bathroom. All appliances are included in this family home just turn the key and enjoy.

Built in 2025

Essential Information

MLS® #	E4436974
Price	\$384,900



Bedrooms 3
 Bathrooms 2.50
 Full Baths 2
 Half Baths 1
 Square Footage 1,240
 Acres 0.00
 Year Built 2025
 Type Condo / Townhouse
 Sub-Type Townhouse
 Style 2 Storey
 Status Active

Community Information

Address 27-2710 66 Street
 Area Edmonton
 Subdivision The Orchards At Ellerslie
 City Edmonton
 County ALBERTA
 Province AB
 Postal Code T6X 3H4

Amenities

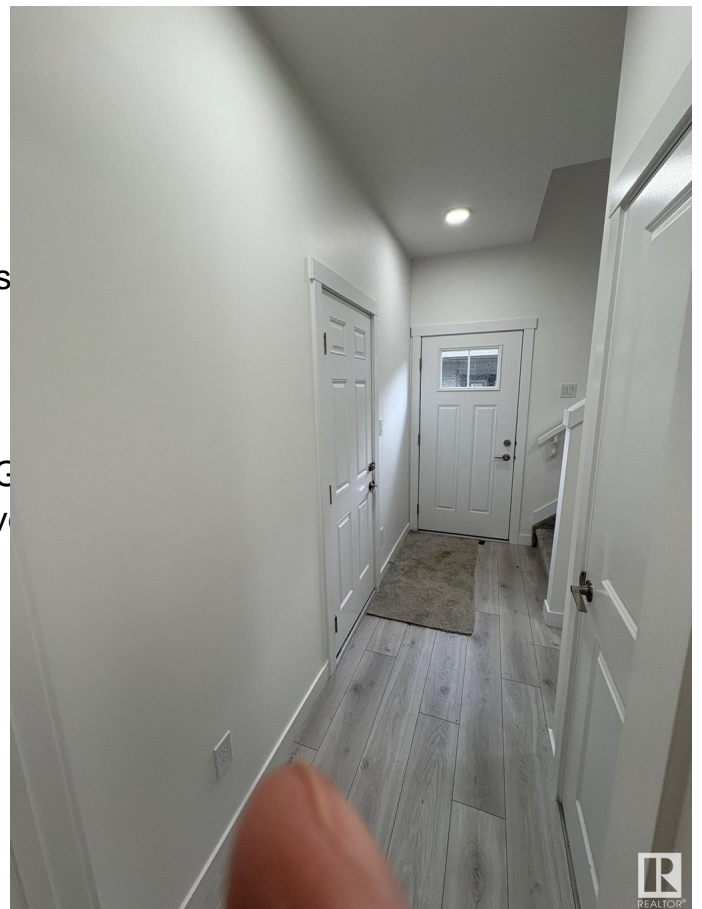
Amenities Deck
 Parking Double Garage Attached, Ins

Interior

Interior Features ensuite bathroom
 Appliances Dishwasher-Built-In, Dryer, G
 Hood Fan, Refrigerator, Stov
 Heating Forced Air-1, Natural Gas
 Stories 2
 Has Basement Yes
 Basement Full, Unfinished

Exterior

Exterior Wood, Vinyl
 Exterior Features Flat Site, Golf Nearby, Landscaped, Public Transportation, Schools,
 Shopping Nearby
 Roof Asphalt Shingles



Construction	Wood, Vinyl
Foundation	Concrete Perimeter

Additional Information

Date Listed	May 16th, 2025
Days on Market	30
Zoning	Zone 53
HOA Fees	450
HOA Fees Freq.	Annually
Condo Fee	\$152

DATA IS DEEMED RELIABLE BUT IS NOT GUARANTEED ACCURATE BY THE REALTORS® ASSOCIATION OF EDMONTON. COPYRIGHT 2025 BY THE REALTORS® ASSOCIATION OF EDMONTON. ALL RIGHTS RESERVED. Trademarks are owned or controlled by the Canadian Real Estate Association (CREA) and identify real estate professionals who are members of CREA (REALTOR®, REALTORS®) and/or the quality of services they provide (MLS®, Multiple Listing Service®)

Listing information last updated on June 15th, 2025 at 5:32am MDT