

\$459,900 - 43 Calista Way, Spruce Grove

MLS® #E4435783

\$459,900

3 Bedroom, 2.50 Bathroom, 1,702 sqft

Single Family on 0.00 Acres

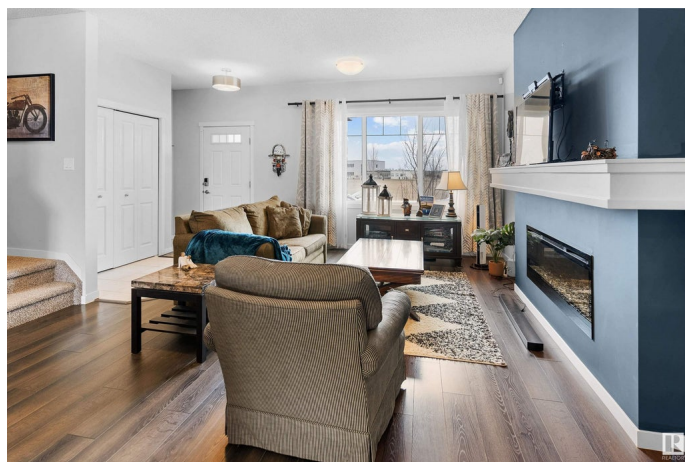
Copperhaven, Spruce Grove, AB

Welcome to this family-friendly 3 bedroom, 2.5 bathroom 2-storey home ideally located across from Copperhaven School! Just steps from scenic walking trails and a pond, this home offers an ideal blend of comfort and convenience. The main floor features 9'™ ceilings, a stylish electric fireplace in the living room, quartz kitchen countertops, a large eating-bar island, and a bright dining area that overlooks the south-facing backyard. Step out onto the back deck—perfect for outdoor meals and entertaining. A rear mudroom with main floor laundry adds everyday function. Upstairs offers a versatile bonus room, two secondary bedrooms, and a spacious primary suite complete with walk-in closet and private ensuite. A detached double garage provides ample parking and storage. Located in a vibrant, walkable community close to schools, parks, and nature—this is the perfect place to call home!

Built in 2018

Essential Information

MLS® #	E4435783
Price	\$459,900
Bedrooms	3
Bathrooms	2.50
Full Baths	2



Half Baths	1
Square Footage	1,702
Acres	0.00
Year Built	2018
Type	Single Family
Sub-Type	Detached Single Family
Style	2 Storey
Status	Active

Community Information

Address	43 Calista Way
Area	Spruce Grove
Subdivision	Copperhaven
City	Spruce Grove
County	ALBERTA
Province	AB
Postal Code	T7X 0Y7

Amenities

Amenities	Ceiling 9 ft., Deck, No Animal Home, No Smoking Home, Storage-In-Suite, HRV System, 9 ft. Basement Ceiling
Parking	Double Garage Detached, Rear Drive Access

Interior

Interior Features	ensuite bathroom
Appliances	Dishwasher-Built-In, Dryer, Garage Control, Garage Opener, Microwave Hood Fan, Refrigerator, Stove-Electric, Washer
Heating	Forced Air-1, Natural Gas
Fireplace	Yes
Fireplaces	Wall Mount
Stories	2
Has Basement	Yes
Basement	Full, Unfinished

Exterior

Exterior	Wood, Vinyl
Exterior Features	Back Lane, Golf Nearby, Schools, Shopping Nearby
Roof	Asphalt Shingles
Construction	Wood, Vinyl

Foundation Concrete Perimeter

School Information

Elementary Copperhaven School K - 9
High Spruce Grove Composite

Additional Information

Date Listed May 10th, 2025
Days on Market 37
Zoning Zone 91

DATA IS DEEMED RELIABLE BUT IS NOT GUARANTEED ACCURATE BY THE REALTORS® ASSOCIATION OF EDMONTON. COPYRIGHT 2025 BY THE REALTORS® ASSOCIATION OF EDMONTON. ALL RIGHTS RESERVED.Trademarks are owned or controlled by the Canadian Real Estate Association (CREA) and identify real estate professionals who are members of CREA (REALTOR®, REALTORS®) and/or the quality of services they provide (MLS®, Multiple Listing Service®)
Listing information last updated on June 16th, 2025 at 12:47am MDT