

# \$775,000 - 5151 Windermere Boulevard, Edmonton

MLS® #E4435470

**\$775,000**

3 Bedroom, 3.00 Bathroom, 2,289 sqft

Condo / Townhouse on 0.00 Acres

Ambleside, Edmonton, AB

Large Executive 2-storey Townhouse style condo. It has it's own underground Double Garage (heated). Park your auto and walk into your Executive Condo. Three Bedrooms (2 with ensuite bathrooms), 3 full Bathrooms, an office/den on upper level. Laundry room in suite in the upper area. A huge Kitchen will appeal to those who like to entertain. The L-shaped counter seats at least 8-10 people. Large pantry next to kitchen. A large Dining area. A double-sided electric fireplace will make those evenings very relaxing. Large south-facing walk-out patio (2 access doors to the patio/deck). Main level has views of the pond and walking area/park. Very quiet unit. These very large Executive Condos do not come on the market a lot. Take a look, and you will see for yourself. It is worth the time.

Built in 2015

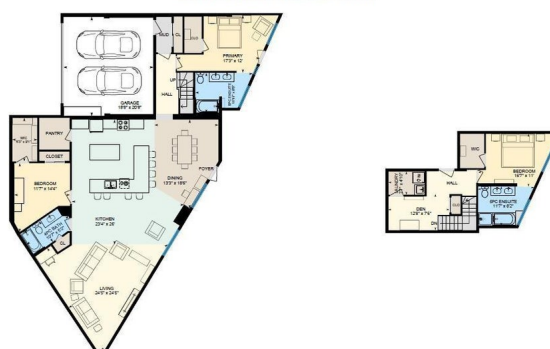
## Essential Information

MLS® #	E4435470
Price	\$775,000
Bedrooms	3
Bathrooms	3.00
Full Baths	3
Square Footage	2,289
Acres	0.00
Year Built	2015



122-5151 Windermere Blvd, Edmonton, AB

Main Building: Total Interior Area Above Grade 2289.74 sq ft



Main Floor  
Interior Area 1796.21 sq ft

2nd Floor  
Interior Area 492.53 sq ft

Type	Condo / Townhouse
Sub-Type	Apartment High Rise
Style	Multi Level Apartment
Status	Active

### Community Information

Address	5151 Windermere Boulevard
Area	Edmonton
Subdivision	Ambleside
City	Edmonton
County	ALBERTA
Province	AB
Postal Code	T6W 2K4

### Amenities

Amenities	Ceiling 9 ft., Club House, Detectors Smoke, Party Room, Patio, Recreation Room/Centre, Concierge Service
Parking Spaces	2
Parking	Double Garage Attached
Is Waterfront	Yes

### Interior

Interior Features	ensuite bathroom
Appliances	Dishwasher-Built-In, Dryer, Microwave Hood Fan, Refrigerator, Stove-Electric, Washer, Window Coverings
Heating	Heat Pump, Natural Gas
Fireplace	Yes
Fireplaces	Wall Mount
# of Stories	12
Stories	2
Has Basement	Yes
Basement	None, No Basement

### Exterior

Exterior	Concrete, Composition
Exterior Features	Backs Onto Lake
Roof	Flat, Tar & Gravel
Construction	Concrete, Composition
Foundation	Concrete Perimeter

**Additional Information**

Date Listed	May 3rd, 2025
Days on Market	43
Zoning	Zone 56
HOA Fees	50
HOA Fees Freq.	Annually
Condo Fee	\$1,501

DATA IS DEEMED RELIABLE BUT IS NOT GUARANTEED ACCURATE BY THE REALTORS® ASSOCIATION OF EDMONTON. COPYRIGHT 2025 BY THE REALTORS® ASSOCIATION OF EDMONTON. ALL RIGHTS RESERVED.Trademarks are owned or controlled by the Canadian Real Estate Association (CREA) and identify real estate professionals who are members of CREA (REALTOR®, REALTORS®) and/or the quality of services they provide (MLS®, Multiple Listing Service®)

Listing information last updated on June 15th, 2025 at 4:17am MDT