

## \$464,900 - 621 Village Drive, Sherwood Park

MLS® #E4435274

**\$464,900**

5 Bedroom, 2.50 Bathroom, 1,359 sqft

Single Family on 0.00 Acres

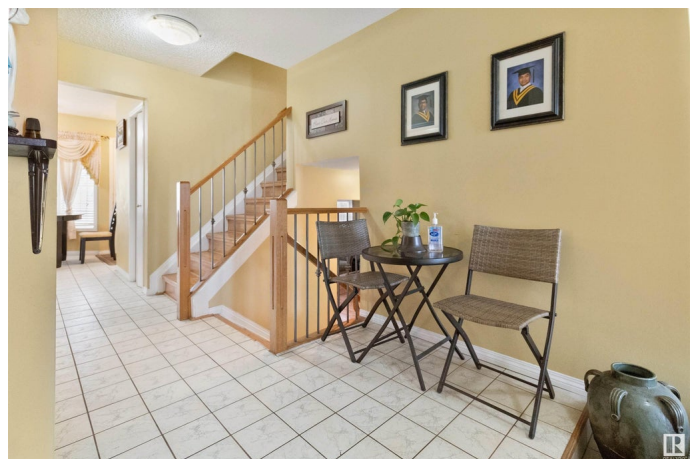
Village on the Lake, Sherwood Park, AB

Located in desirable Village on the Lake, this 1450+ sq ft 4 level split is just waiting for new owners to put their personal mark on. The main floor is spacious and consists of a large living room, dining room and kitchen which leads to backyard. The upper level has a huge master suite with a 4 pce ensuite, and a walk in closet. Two more large bedrooms and a 4 pce bath complete the upper floor. The lower level has a large family room, a 4th bedroom and 2 pce bathroom. The basement is finished with a wet bar, and a laundry area. Furnace was replaced approximately 10 years ago.

Built in 1981

### Essential Information

|                |                        |
|----------------|------------------------|
| MLS® #         | E4435274               |
| Price          | \$464,900              |
| Bedrooms       | 5                      |
| Bathrooms      | 2.50                   |
| Full Baths     | 2                      |
| Half Baths     | 1                      |
| Square Footage | 1,359                  |
| Acres          | 0.00                   |
| Year Built     | 1981                   |
| Type           | Single Family          |
| Sub-Type       | Detached Single Family |
| Style          | 4 Level Split          |



Status Active

## Community Information

|             |                     |
|-------------|---------------------|
| Address     | 621 Village Drive   |
| Area        | Sherwood Park       |
| Subdivision | Village on the Lake |
| City        | Sherwood Park       |
| County      | ALBERTA             |
| Province    | AB                  |
| Postal Code | T8A 4K7             |

## Amenities

|           |                        |
|-----------|------------------------|
| Amenities | See Remarks            |
| Parking   | Double Garage Attached |

## Interior

|                   |                           |        |               |                 |        |
|-------------------|---------------------------|--------|---------------|-----------------|--------|
| Interior Features | ensuite bathroom          |        |               |                 |        |
| Appliances        | Dishwasher-Built-In,      | Dryer, | Refrigerator, | Stove-Electric, | Vacuum |
|                   | Systems, Washer           |        |               |                 |        |
| Heating           | Forced Air-2, Natural Gas |        |               |                 |        |
| Stories           | 4                         |        |               |                 |        |
| Has Basement      | Yes                       |        |               |                 |        |
| Basement          | Full, Finished            |        |               |                 |        |

## Exterior

|                   |   |
|-------------------|---|
| Exterior          | Wood, Brick, Vinyl  |
| Exterior Features | Fenced, Landscaped, Public Transportation, Schools, See Remarks |
| Roof              | Asphalt Shingles  |
| Construction      | Wood, Brick, Vinyl  |
| Foundation        | Concrete Perimeter  |

## Additional Information

|                |               |
|----------------|---------------|
| Date Listed    | May 8th, 2025 |
| Days on Market | 1             |
| Zoning         | Zone 25       |

DATA IS DEEMED RELIABLE BUT IS NOT GUARANTEED ACCURATE BY THE REALTORS® ASSOCIATION OF EDMONTON. COPYRIGHT 2025 BY THE REALTORS® ASSOCIATION OF EDMONTON. ALL RIGHTS RESERVED. Trademarks are owned or controlled by the Canadian Real Estate Association (CREA) and identify real estate professionals who are members of CREA (REALTOR®, REALTORS®) and/or the quality of services they provide (MLS®, Multiple Listing Service®)

Listing information last updated on May 9th, 2025 at 7:47pm MDT