

Courtesy Of Mike Marsh Of Grassroots Realty Group

\$198,000 - 11408 108 Avenue, Edmonton

MLS® #E4434862

\$198,000

2 Bedroom, 2.00 Bathroom, 1,147 sqft

Condo / Townhouse on 0.00 Acres

Queen Mary Park, Edmonton, AB

Welcome to this beautifully updated 2 BED, 2 BATH condo located in the vibrant community of Queen Mary Park! This condo is perfectly situated near parks, markets, shopping, dining, and public transportation offering an unbeatable downtown lifestyle! Inside you will be greeted by an abundance of large windows that provide unobstructed views of the surrounding tree lined streets. The open-concept kitchen is outfitted with sleek stainless steel appliances, walk-up bar, and a spacious dining area accented by modern lighting. Both bedrooms offer great potential, with the primary suite featuring a private 4-piece ensuite. Additional highlights include another 3 PC Bath, in-suite laundry with a contemporary stackable washer and dryer, large closets, a private patio for relaxing & even an oversized parking stall! Set in a quiet, well-maintained building, this condo is ideal for professionals, first-time buyers, or investors seeking a low-maintenance urban lifestyle. Donâ€™t miss it!

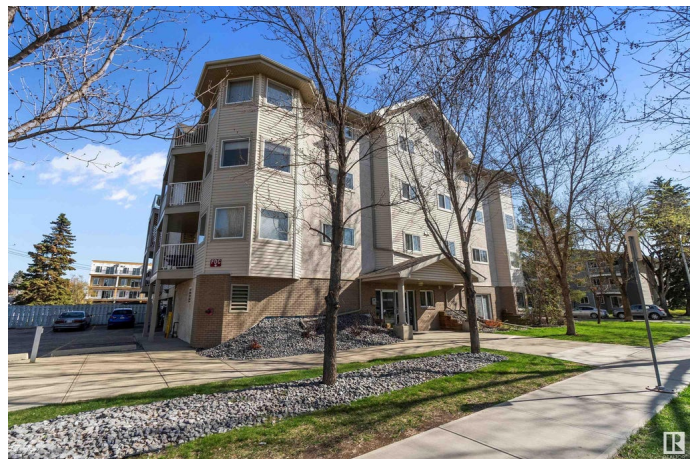
Built in 2003

Essential Information

MLS® # E4434862

Price \$198,000

Bedrooms 2



| | |
|----------------|------------------------|
| Bathrooms | 2.00 |
| Full Baths | 2 |
| Square Footage | 1,147 |
| Acres | 0.00 |
| Year Built | 2003 |
| Type | Condo / Townhouse |
| Sub-Type | Lowrise Apartment |
| Style | Single Level Apartment |
| Status | Active |

Community Information

| | |
|-------------|------------------|
| Address | 11408 108 Avenue |
| Area | Edmonton |
| Subdivision | Queen Mary Park |
| City | Edmonton |
| County | ALBERTA |
| Province | AB |
| Postal Code | T5H 4R5 |

Amenities

| | |
|----------------|--|
| Amenities | No Smoking Home, Patio, Security Door, See Remarks |
| Parking Spaces | 1 |
| Parking | Stall |

Interior

| | |
|-------------------|--|
| Interior Features | ensuite bathroom |
| Appliances | Dishwasher-Built-In, Dryer, Hood Fan, Oven-Microwave, Refrigerator, Stove-Electric, Washer, Window Coverings |
| Heating | Baseboard, Water |
| # of Stories | 4 |
| Stories | 4 |
| Has Basement | Yes |
| Basement | None, No Basement |

Exterior

| | |
|-------------------|--|
| Exterior | Wood, Vinyl |
| Exterior Features | Playground Nearby, Private Setting, Public Transportation, Schools, Shopping Nearby, See Remarks |
| Roof | Asphalt Shingles |

| | |
|--------------|--------------------|
| Construction | Wood, Vinyl |
| Foundation | Concrete Perimeter |

School Information

| | |
|------------|-------------------------|
| Elementary | Queen Mary Park School |
| Middle | John A McDougall |
| High | Victoria School of Arts |

Additional Information

| | |
|----------------|---------------|
| Date Listed | May 7th, 2025 |
| Days on Market | 39 |
| Zoning | Zone 08 |
| Condo Fee | \$699 |

DATA IS DEEMED RELIABLE BUT IS NOT GUARANTEED ACCURATE BY THE REALTORS® ASSOCIATION OF EDMONTON. COPYRIGHT 2025 BY THE REALTORS® ASSOCIATION OF EDMONTON. ALL RIGHTS RESERVED. Trademarks are owned or controlled by the Canadian Real Estate Association (CREA) and identify real estate professionals who are members of CREA (REALTOR®, REALTORS®) and/or the quality of services they provide (MLS®, Multiple Listing Service®)

Listing information last updated on June 15th, 2025 at 4:47pm MDT