

# \$184,900 - 155 Edwards Drive, Edmonton

MLS® #E4433777

**\$184,900**

2 Bedroom, 2.00 Bathroom, 830 sqft  
Condo / Townhouse on 0.00 Acres

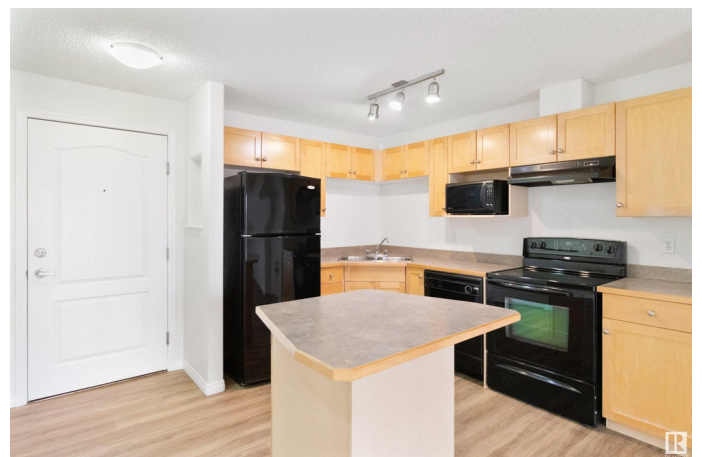
Ellerslie, Edmonton, AB

Bright, spacious, with fresh paint, new vinyl plank flooring, new carpet in bedrooms, and new vinyl in bathrooms. This 2 bedroom, 2 bathroom is sure to impress. The open concept kitchen provides plenty of work space with the moveable island, and is great for entertaining as it's open to the large living rooms that leads to the cozy balcony. The primary bedroom includes a double-sided walk-through closet and 4pc ensuite. The second bedroom which is a perfect second bedroom or a home office, is conveniently located by the second bathroom and in suite laundry. Did I mention the TITLED, TANDEM, HEATED, UNDERGROUND PARKING STALL? This condo is conveniently located in Ellerslie and close to the Henday and to public transit.

Built in 2005

## Essential Information

MLS® #	E4433777
Price	\$184,900
Bedrooms	2
Bathrooms	2.00
Full Baths	2
Square Footage	830
Acres	0.00
Year Built	2005



Type	Condo / Townhouse
Sub-Type	Lowrise Apartment
Style	Single Level Apartment
Status	Active

### Community Information

Address	155 Edwards Drive
Area	Edmonton
Subdivision	Ellerslie
City	Edmonton
County	ALBERTA
Province	AB
Postal Code	T6X 1N6

### Amenities

Amenities	Exercise Room, Intercom, Security Door, See Remarks
Parking	Underground

### Interior

Interior Features	ensuite bathroom
Appliances	Dishwasher-Built-In, Dryer, Microwave Hood Fan, Refrigerator, Stove-Electric, Washer, Window Coverings
Heating	Forced Air-1, Natural Gas
# of Stories	4
Stories	1
Has Basement	Yes
Basement	None, No Basement

### Exterior

Exterior	Wood, Vinyl
Exterior Features	Playground Nearby, Schools, Shopping Nearby, See Remarks
Roof	Asphalt Shingles
Construction	Wood, Vinyl
Foundation	Concrete Perimeter

### Additional Information

Date Listed	May 1st, 2025
Days on Market	45
Zoning	Zone 53

Condo Fee            \$584

DATA IS DEEMED RELIABLE BUT IS NOT GUARANTEED ACCURATE BY THE REALTORS® ASSOCIATION OF EDMONTON. COPYRIGHT 2025 BY THE REALTORS® ASSOCIATION OF EDMONTON. ALL RIGHTS RESERVED. Trademarks are owned or controlled by the Canadian Real Estate Association (CREA) and identify real estate professionals who are members of CREA (REALTOR®, REALTORS®) and/or the quality of services they provide (MLS®, Multiple Listing Service®)

Listing information last updated on June 15th, 2025 at 5:17am MDT