

Courtesy Of Deb A Williams Of MaxWell Polaris

## **\$419,900 - 1432 70 Street, Edmonton**

---

MLS® #E4432757

**\$419,900**

3 Bedroom, 2.50 Bathroom, 1,208 sqft  
Single Family on 0.00 Acres

Summerside, Edmonton, AB

GREAT BUY IN SUMMERSIDE! This 3 bdrm, 2 1/2 bath, 2 storey single-family detached home is located ACROSS FROM HUGE GREEN SPACE, with Summerside Lake Access and all that this lovely community has to offer! (HOA paid for 2025) Incredibly well maintained. New fridge, dishwasher (Bosch), HWT, newer ceramic cook-top stove, washer, dryer, under-counter lights, paint, humidifier. Built in speakers for sound system. Open concept living area, with great kitchen, fireplace, and half-bath tucked away down a couple steps. Second level has 2 equal sized bdrms, and a 4 piece bath, plus Primary Bdrm with walk-in closet, and 4 piece ensuite. Basement is insulated, part dry-walled and ready to become your extra living space. NEW double garage, with shelving and storage!! (alley access) Large deck with ample room for BBQ and family get-togethers. New sod and landscaping. Welcome Home

Built in 2007

### **Essential Information**

MLS® #	E4432757
Price	\$419,900
Bedrooms	3
Bathrooms	2.50
Full Baths	2



Half Baths 1  
 Square Footage 1,208  
 Acres 0.00  
 Year Built 2007  
 Type Single Family  
 Sub-Type Detached Single Family  
 Style 2 Storey  
 Status Active

**Community Information**

Address 1432 70 Street  
 Area Edmonton  
 Subdivision Summerside  
 City Edmonton  
 County ALBERTA  
 Province AB  
 Postal Code T6X 0H3

**Amenities**

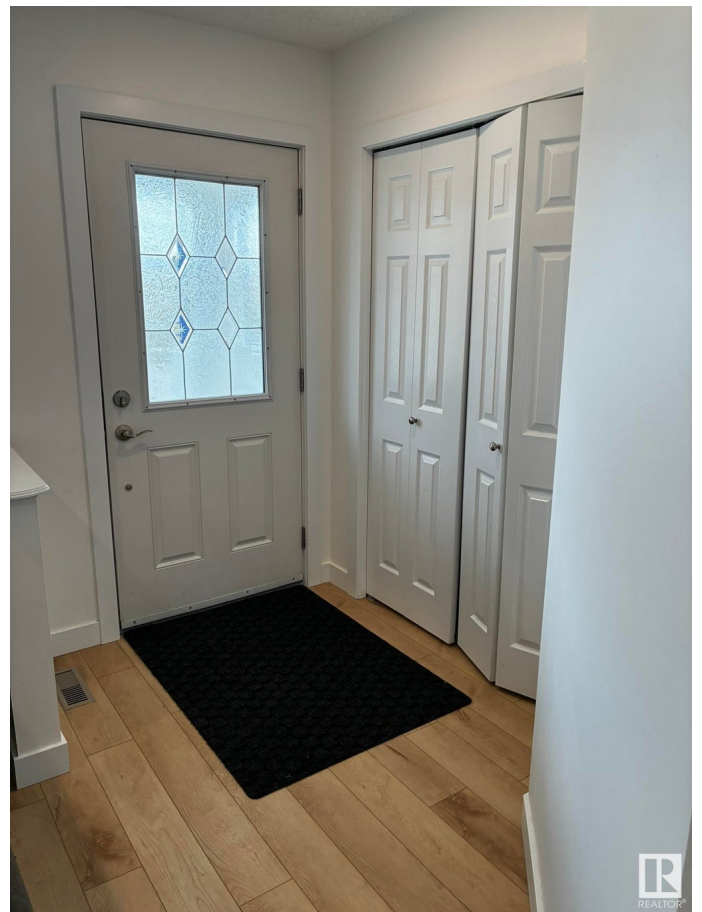
Amenities Off Street Parking, On Street Home  
 Parking Double Garage Detached

**Interior**

Interior Features ensuite bathroom  
 Appliances Dishwasher-Built-In, Dryer, C, Hood Fan, Refrigerator, Stov  
 Heating Forced Air-1, Natural Gas  
 Fireplace Yes  
 Fireplaces See Remarks  
 Stories 2  
 Has Basement Yes  
 Basement Full, Partially Finished

**Exterior**

Exterior Wood, Vinyl  
 Exterior Features Airport Nearby, Back Lane, Fenced, Golf Nearby, Lake Access Property, Paved Lane, Playground Nearby, Public Transportation, Schools  
 Roof Asphalt Shingles



Construction	Wood, Vinyl
Foundation	Concrete Perimeter

### **Additional Information**

Date Listed	April 25th, 2025
Days on Market	3
Zoning	Zone 53
HOA Fees	443.71
HOA Fees Freq.	Annually

DATA IS DEEMED RELIABLE BUT IS NOT GUARANTEED ACCURATE BY THE REALTORS® ASSOCIATION OF EDMONTON. COPYRIGHT 2025 BY THE REALTORS® ASSOCIATION OF EDMONTON. ALL RIGHTS RESERVED. Trademarks are owned or controlled by the Canadian Real Estate Association (CREA) and identify real estate professionals who are members of CREA (REALTOR®, REALTORS®) and/or the quality of services they provide (MLS®, Multiple Listing Service®)

Listing information last updated on April 28th, 2025 at 3:32am MDT