

\$250,000 - 204 10011 110 Street, Edmonton

MLS® #E4430097

\$250,000

2 Bedroom, 2.00 Bathroom, 956 sqft

Condo / Townhouse on 0.00 Acres

Wähkwäntäwin, Edmonton, AB

Perfect for first-time buyers or empty nesters craving urban living with an active lifestyle! This 2 bed, 2 bath corner unit in The Savoy offers separately titled underground parking, in-suite laundry, 9ft ceilings, huge windows & updates throughout including fixtures, paint & wide-plank laminate floors. The upgraded kitchen features granite counters, stainless appliances, glass tile backsplash & a full dining space that opens to a cozy living room with a gas fireplace. Enjoy extra in-suite storage & heated tile floors in both baths. The primary bedroom boasts a walk-thru closet to the full ensuite. Relax on your northeast-facing balcony with a gas BBQ hookup, overlooking the High Level Bridge Streetcar in the summer. YouäTMll be steps from the river valley, Victoria Promenade, Grandin LRT, groceries, restaurants, Brewery/Ice Districts & Legislature grounds. Nestled on a tree-lined street just off Jasper Aveäthis move-in ready home offers a fantastic location with convenience, comfort & style. Act today!

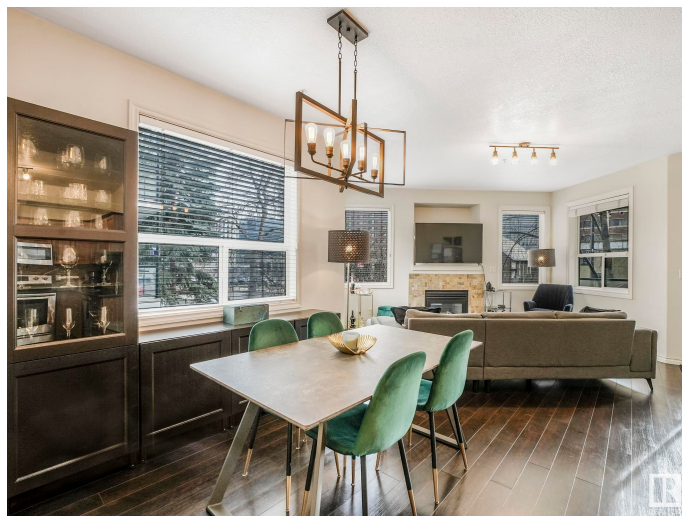
Built in 2000

Essential Information

MLS® # E4430097

Price \$250,000

Bedrooms 2



Bathrooms	2.00
Full Baths	2
Square Footage	956
Acres	0.00
Year Built	2000
Type	Condo / Townhouse
Sub-Type	Lowrise Apartment
Style	Single Level Apartment
Status	Active

Community Information

Address	204 10011 110 Street
Area	Edmonton
Subdivision	W&hkw”win
City	Edmonton
County	ALBERTA
Province	AB
Postal Code	T5K 2X1

Amenities

Amenities	On Street Parking, Ceiling 9 ft., Closet Organizers, Deck, Detectors Smoke, Intercom, Parking-Visitor, Secured Parking, Security Door, Sprinkler System-Fire, Storage-In-Suite, Vinyl Windows, See Remarks, Storage Cage, Natural Gas BBQ Hookup
Parking Spaces	1
Parking	Parkade, Stall, Underground

Interior

Interior Features	ensuite bathroom
Appliances	Dishwasher-Built-In, Dryer, Fan-Ceiling, Microwave Hood Fan, Refrigerator, Stove-Electric, Washer, See Remarks
Heating	In Floor Heat System, Natural Gas
Fireplace	Yes
Fireplaces	Masonry
# of Stories	5
Stories	5
Has Basement	Yes
Basement	None, No Basement

Exterior

Exterior	Wood, Stucco
Exterior Features	Fenced, Flat Site, Golf Nearby, Low Maintenance Landscape, No Back Lane, Park/Reserve, Picnic Area, Playground Nearby, Public Swimming Pool, Public Transportation, Schools, Shopping Nearby, Ski Hill Nearby, View City, See Remarks
Roof	SBS Roofing System
Construction	Wood, Stucco
Foundation	Concrete Perimeter

School Information

Elementary	WĀŽHKWĀŠNTĀ”WIN
Middle	WESTMINSTER
High	VICTORIA

Additional Information

Date Listed	April 10th, 2025
Days on Market	17
Zoning	Zone 12
Condo Fee	\$606

DATA IS DEEMED RELIABLE BUT IS NOT GUARANTEED ACCURATE BY THE REALTORS® ASSOCIATION OF EDMONTON. COPYRIGHT 2025 BY THE REALTORS® ASSOCIATION OF EDMONTON. ALL RIGHTS RESERVED.Trademarks are owned or controlled by the Canadian Real Estate Association (CREA) and identify real estate professionals who are members of CREA (REALTOR®, REALTORS®) and/or the quality of services they provide (MLS®, Multiple Listing Service®)

Listing information last updated on April 27th, 2025 at 8:02pm MDT