

\$145,000 - 8918c 144 Avenue, Edmonton

MLS® #E4429981

\$145,000

2 Bedroom, 1.00 Bathroom, 500 sqft

Condo / Townhouse on 0.00 Acres

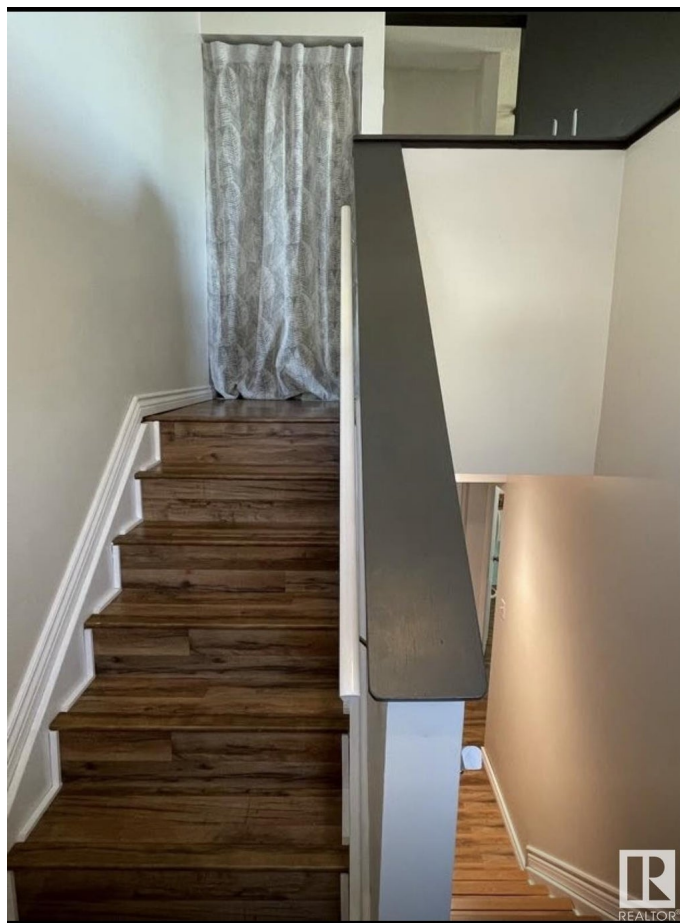
Evansdale, Edmonton, AB

Welcome to this beautifully updated townhouse, ideally located in a family-friendly community. This south-facing home offers an abundance of natural light and park views from your very own patio. Inside, youâ€™ll find a thoughtfully renovated interior, featuring gorgeous stone countertops and stainless steel appliances in the kitchen. The home also boasts a spacious laundry room with storage and newer washer and dryer. With two spacious bedrooms and a well-appointed bathroom, this townhouse offers both comfort and convenience. Itâ€™s perfect for a small family or anyone looking for a peaceful retreat in a prime location. Situated just minutes from excellent schools, parks, and local amenities, this home combines style, functionality, and an unbeatable location.

Built in 1974

Essential Information

MLS® #	E4429981
Price	\$145,000
Bedrooms	2
Bathrooms	1.00
Full Baths	1
Square Footage	500
Acres	0.00
Year Built	1974



Type	Condo / Townhouse
Sub-Type	Townhouse
Style	Bi-Level
Status	Active

Community Information

Address	8918c 144 Avenue
Area	Edmonton
Subdivision	Evansdale
City	Edmonton
County	ALBERTA
Province	AB
Postal Code	T5E 5V4

Amenities

Amenities	Off Street Parking, On Street Parking, No Animal Home, No Smoking Home, Parking-Plug-Ins, Patio, Security Window Bars, Storage-In-Suite, Vinyl Windows
Parking	Stall

Interior

Appliances	Dryer, Refrigerator, Stove-Electric, Washer
Heating	Forced Air-1, Natural Gas
Stories	2
Has Basement	Yes
Basement	Full, Finished

Exterior

Exterior	Wood
Exterior Features	Playground Nearby, Public Transportation, Schools, Shopping Nearby
Roof	Asphalt Shingles
Construction	Wood
Foundation	Concrete Perimeter

School Information

Elementary	St.Anne, Dickensfield
Middle	Cardinal Leger

Additional Information

Date Listed	April 10th, 2025
-------------	------------------

Days on Market 19
Zoning Zone 02
Condo Fee \$365



DATA IS DEEMED RELIABLE BUT IS NOT GUARANTEED ACCURATE BY THE REALTORS® ASSOCIATION OF EDMONTON. COPYRIGHT 2025 BY THE REALTORS® ASSOCIATION OF EDMONTON. ALL RIGHTS RESERVED.Trademarks are owned or controlled by the Canadian Real Estate Association (CREA) and identify real estate professionals who are members of CREA (REALTOR®, REALTORS®) and/or the quality of services they provide (MLS®, Multiple Listing Service®)

Listing information last updated on April 29th, 2025 at 8:17am MDT