

## \$459,900 - 4716 150 Avenue, Edmonton

MLS® #E4429727

**\$459,900**

5 Bedroom, 3.00 Bathroom, 1,325 sqft

Single Family on 0.00 Acres

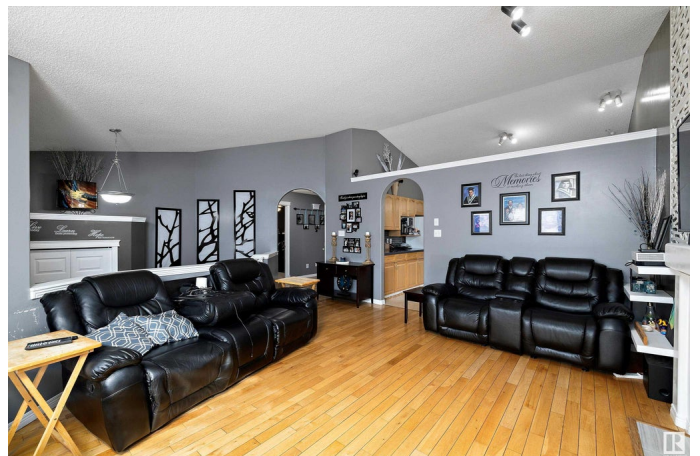
Miller, Edmonton, AB

4716 150 Ave â€” The Perfect Family Home! This beautifully maintained 4-bedroom, 3-bathroom home offers comfort, space, and functionality in every corner. Nestled on a quiet street, it boasts a large backyard that's perfect for kids, pets or summer gatherings â€” complete with a covered back patio for year-round enjoyment. Inside, you'll find a spacious basement, ideal for a family rec room, home gym, or additional living space. The main level is bright and inviting with plenty of room for entertaining, and the bedrooms are generously sized to accommodate the whole family. Whether you're hosting guests or enjoying a quiet evening at home, this property has everything you need. Located close to schools, parks, shopping, and transit, 4716 150 Ave offers the best of both convenience and community. Donâ€™t miss out â€” this one wonâ€™t last long!

Built in 2000

### Essential Information

MLS® #	E4429727
Price	\$459,900
Bedrooms	5
Bathrooms	3.00
Full Baths	3
Square Footage	1,325



Acres	0.00
Year Built	2000
Type	Single Family
Sub-Type	Detached Single Family
Style	Bi-Level
Status	Active

### Community Information

Address	4716 150 Avenue
Area	Edmonton
Subdivision	Miller
City	Edmonton
County	ALBERTA
Province	AB
Postal Code	T5Y 2Z3

### Amenities

Amenities	Deck
Parking	Double Garage Attached

### Interior

Interior Features	ensuite bathroom
Appliances	Dishwasher-Built-In, Dryer, Garage Control, Garage Opener, Microwave Hood Fan, Refrigerator, Stove-Electric, Washer, Window Coverings
Heating	Forced Air-1, Natural Gas
Fireplace	Yes
Fireplaces	Mantel, Tile Surround
Stories	2
Has Basement	Yes
Basement	Full, Finished

### Exterior

Exterior	Wood, Brick, Vinyl
Exterior Features	Fenced, No Back Lane, No Through Road, Playground Nearby, Schools, Shopping Nearby
Roof	Asphalt Shingles
Construction	Wood, Brick, Vinyl
Foundation	Concrete Perimeter

### School Information

Elementary	McLeod, St. Dominic
Middle	Steele Hghts, J. J. Bowlen
High	ME Lazerte, Arch Oâ€™Leary

**Additional Information**

Date Listed	April 8th, 2025
Days on Market	67
Zoning	Zone 02

DATA IS DEEMED RELIABLE BUT IS NOT GUARANTEED ACCURATE BY THE REALTORS® ASSOCIATION OF EDMONTON. COPYRIGHT 2025 BY THE REALTORS® ASSOCIATION OF EDMONTON. ALL RIGHTS RESERVED.Trademarks are owned or controlled by the Canadian Real Estate Association (CREA) and identify real estate professionals who are members of CREA (REALTOR®, REALTORS®) and/or the quality of services they provide (MLS®, Multiple Listing Service®)

Listing information last updated on June 14th, 2025 at 7:32pm MDT