

\$759,000 - 30 Avonlea Way, Spruce Grove

MLS® #E4429233

\$759,000

3 Bedroom, 2.00 Bathroom, 1,864 sqft

Single Family on 0.00 Acres

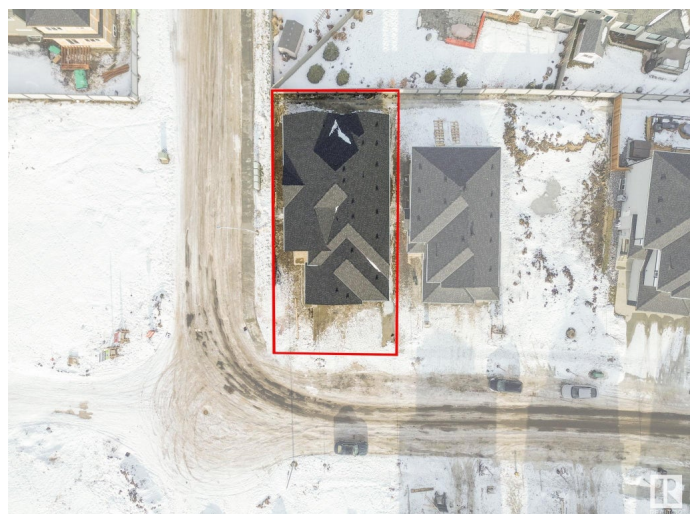
Jesperdale, Spruce Grove, AB

If you have been looking for a large Executive Bungalow - then this is your House. WOW Huge 3 Bedroom Bungalow at an unreal price. This home is loaded with Custom features: Including 10 Ft Main Floor Ceilings, Wide plank Engineered flooring, Custom Tile Work throughout, Huge Entertainers Kitchen with Butler Nook (extended Cabinetry). Upgraded Stainless Steel Appliances, Upgraded lighting and Hardware PKG, Custom Kitchen Cabinets, Walk In Pantry, Main floor features, Huge Open Concept Great Room with Custom Fireplace. Huge Spa Like Ensuite off Master. Full sized Laundry room with Sink. Triple Garage will come with a main floor drain & gas line to install future Heater. Great House on a great Street.

Built in 2024

Essential Information

MLS® #	E4429233
Price	\$759,000
Bedrooms	3
Bathrooms	2.00
Full Baths	2
Square Footage	1,864
Acres	0.00
Year Built	2024



Type	Single Family
Sub-Type	Detached Single Family
Style	Bungalow
Status	Active

Community Information

Address	30 Avonlea Way
Area	Spruce Grove
Subdivision	Jesperdale
City	Spruce Grove
County	ALBERTA
Province	AB
Postal Code	T7X 0Y3

Amenities

Amenities	Ceiling 10 ft.
Parking Spaces	6
Parking	Triple Garage Attached

Interior

Interior Features	ensuite bathroom
Appliances	Dishwasher-Built-In, Dryer, Hood Fan, Oven-Built-In, Oven-Microwave, Refrigerator, Stove-Countertop Gas, Washer
Heating	Forced Air-1, Natural Gas
Stories	1
Has Basement	Yes
Basement	Full, Unfinished

Exterior

Exterior	Wood, Stone, Vinyl
Exterior Features	Corner Lot, Golf Nearby, No Back Lane, Public Transportation, Schools, Shopping Nearby
Roof	Asphalt Shingles
Construction	Wood, Stone, Vinyl
Foundation	Concrete Perimeter

Additional Information

Date Listed	April 4th, 2025
Days on Market	22

Zoning

Zone 91

DATA IS DEEMED RELIABLE BUT IS NOT GUARANTEED ACCURATE BY THE REALTORS® ASSOCIATION OF EDMONTON. COPYRIGHT 2025 BY THE REALTORS® ASSOCIATION OF EDMONTON. ALL RIGHTS RESERVED. Trademarks are owned or controlled by the Canadian Real Estate Association (CREA) and identify real estate professionals who are members of CREA (REALTOR®, REALTORS®) and/or the quality of services they provide (MLS®, Multiple Listing Service®)

Listing information last updated on April 26th, 2025 at 11:17am MDT