

Courtesy Of Mani Bagga Of Royal Lepage Magna

## **\$4,488,800 - 211 Windermere Drive, Edmonton**

MLS® #E4429220

**\$4,488,800**

7 Bedroom, 8.50 Bathroom, 7,059 sqft

Single Family on 0.00 Acres

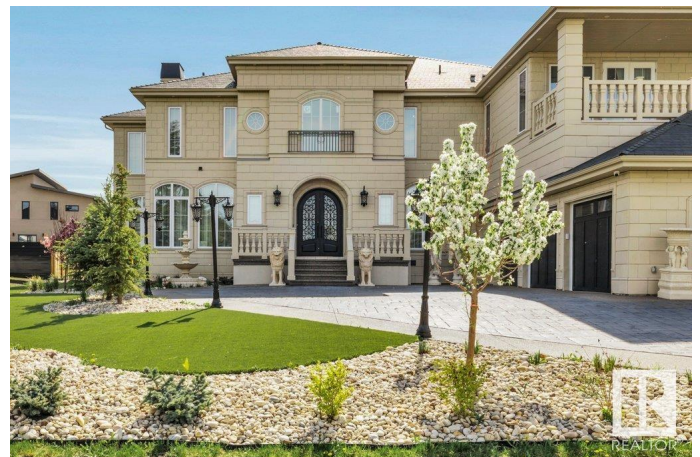
Windermere, Edmonton, AB

Welcome to Windermere! Luxury Living & Grandeur at Its Finest in an Affluent Community! Spanning over a sprawling estate of over 10,385 sq.ft. this home boasts 7 bedrooms, 6 ensuite bathrooms, 1 common bath & 3 half-baths! You are welcomed w/ a grand double-door entryway w/ intricate wrought-iron details, complemented by tall windows & luxurious drapery. The interior showcases an open-concept living space w/ 20 ft ceilings, intricate architectural details incl. archways & molding. Massive crystal chandeliers enhance home's grandeur! The kitchen has sleek solid wood cabinetry, marble countertops & gold-accented fixtures + a SPICE KITCHEN w/ stove, sink, counter space & storage for ingredients & utensils! Upstairs features dark wood & wrought-iron railings overlooking the living area, 3 bedrms all w/ its own 5-pc ensuite. The Primary bedroom offers a LOUNGE & COFFEE BAR w/ a PRIVATE BALCONY! The basement features A GYM, A VERSATILE OFFICE/DEN, REC ROOM & GRAND HOME THEATRE! BACKYARD has EXTERIOR KITCHEN!

Built in 2022

### **Essential Information**

MLS® #	E4429220
Price	\$4,488,800



Bedrooms	7
Bathrooms	8.50
Full Baths	7
Half Baths	3
Square Footage	7,059
Acres	0.00
Year Built	2022
Type	Single Family
Sub-Type	Detached Single Family
Style	2 Storey
Status	Active

### Community Information

Address	211 Windermere Drive
Area	Edmonton
Subdivision	Windermere
City	Edmonton
County	ALBERTA
Province	AB
Postal Code	T6W 0S4

### Amenities

Amenities	Air Conditioner, Ceiling 10 ft., Closet Organizers, Deck, Exercise Room, Walkout Basement, Wet Bar, See Remarks, Natural Gas BBQ Hookup
Parking Spaces	10
Parking	Heated, Over Sized, Quad or More Attached, Triple Garage Attached

### Interior

Interior Features	ensuite bathroom
Appliances	Air Conditioning-Central, Dryer, Oven-Built-In, Window Coverings, Dryer-Two, Refrigerators-Two, Stoves-Two, Washers-Two, Dishwasher-Two, Microwave Hood Fan-Two, Garage Heater
Heating	Forced Air-2, Natural Gas
Fireplace	Yes
Fireplaces	Tile Surround
Stories	3
Has Basement	Yes
Basement	Full, Finished

### Exterior

Exterior	Wood, Concrete, Stone
Exterior Features	Airport Nearby, Fenced, Flat Site, Golf Nearby, Landscaped, No Back Lane, Park/Reserve, Playground Nearby, Schools, Shopping Nearby, Treed Lot
Roof	Asphalt Shingles
Construction	Wood, Concrete, Stone
Foundation	Concrete Perimeter

### **School Information**

Elementary	Constable Daniel Woodall
Middle	Riverbend School
High	Lillian Osborne School

### **Additional Information**

Date Listed	April 4th, 2025
Days on Market	71
Zoning	Zone 56

DATA IS DEEMED RELIABLE BUT IS NOT GUARANTEED ACCURATE BY THE REALTORS® ASSOCIATION OF EDMONTON. COPYRIGHT 2025 BY THE REALTORS® ASSOCIATION OF EDMONTON. ALL RIGHTS RESERVED. Trademarks are owned or controlled by the Canadian Real Estate Association (CREA) and identify real estate professionals who are members of CREA (REALTOR®, REALTORS®) and/or the quality of services they provide (MLS®, Multiple Listing Service®)

Listing information last updated on June 13th, 2025 at 11:17pm MDT