

## \$267,888 - 603 Youville Drive, Edmonton

MLS® #E4428549

**\$267,888**

3 Bedroom, 1.50 Bathroom, 1,251 sqft

Condo / Townhouse on 0.00 Acres

Tawa, Edmonton, AB

Welcome to this well-maintained 3-bedroom, 1.5-bathroom townhome in the desirable Parkside community. Perfectly situated for convenience, this home is just a short walk to schools, shopping, and the Grey Nuns Hospital, with a beautiful city park right next door, making outdoor activities effortless. Backing onto a private community playground, this home offers a safe and fun space for kids—just steps from your back door. Enjoy the ease of two assigned parking stalls right outside your front door, along with a handy storage room attached to the front porch. With a partially finished basement, this townhome provides extra space to grow, making it an excellent choice for first-time buyers, young families, or anyone looking for a comfortable, low-maintenance home in a fantastic location. Don't miss this opportunity!

Built in 1993

### Essential Information

MLS® #	E4428549
Price	\$267,888
Bedrooms	3
Bathrooms	1.50
Full Baths	1
Half Baths	1
Square Footage	1,251



Acres	0.00
Year Built	1993
Type	Condo / Townhouse
Sub-Type	Townhouse
Style	2 Storey
Status	Active

### Community Information

Address	603 Youville Drive
Area	Edmonton
Subdivision	Tawa
City	Edmonton
County	ALBERTA
Province	AB
Postal Code	T6L 6V8

### Amenities

Amenities	Deck
Parking Spaces	2
Parking	2 Outdoor Stalls

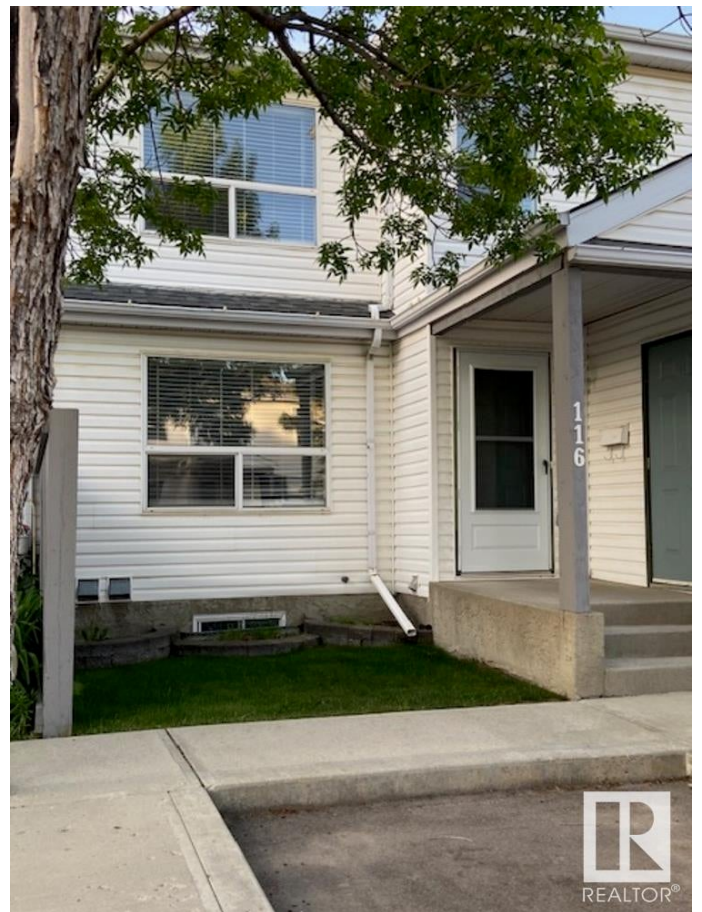
### Interior

Appliances	Dishwasher-Built-In, Dryer, Window Coverings
Heating	Forced Air-1, Natural Gas
Fireplace	Yes
Fireplaces	Tile Surround
Stories	2
Has Basement	Yes
Basement	Full, Partially Finished

### Exterior

Exterior	Wood, Vinyl
Exterior Features	Backs Onto Park/Trees, Landscaped, Playground Nearby, Schools, Shopping Nearby
Roof	Asphalt Shingles
Construction	Wood, Vinyl
Foundation	Concrete Perimeter

### Additional Information



Date Listed	April 2nd, 2025
Days on Market	74
Zoning	Zone 29
Condo Fee	\$306

DATA IS DEEMED RELIABLE BUT IS NOT GUARANTEED ACCURATE BY THE REALTORS® ASSOCIATION OF EDMONTON. COPYRIGHT 2025 BY THE REALTORS® ASSOCIATION OF EDMONTON. ALL RIGHTS RESERVED. Trademarks are owned or controlled by the Canadian Real Estate Association (CREA) and identify real estate professionals who are members of CREA (REALTOR®, REALTORS®) and/or the quality of services they provide (MLS®, Multiple Listing Service®)

Listing information last updated on June 15th, 2025 at 6:32am MDT