

\$1,150,000 - 13436 140 Avenue, Edmonton

MLS® #E4426165

\$1,150,000

6 Bedroom, 4.00 Bathroom, 3,202 sqft

Single Family on 0.00 Acres

Hudson, Edmonton, AB

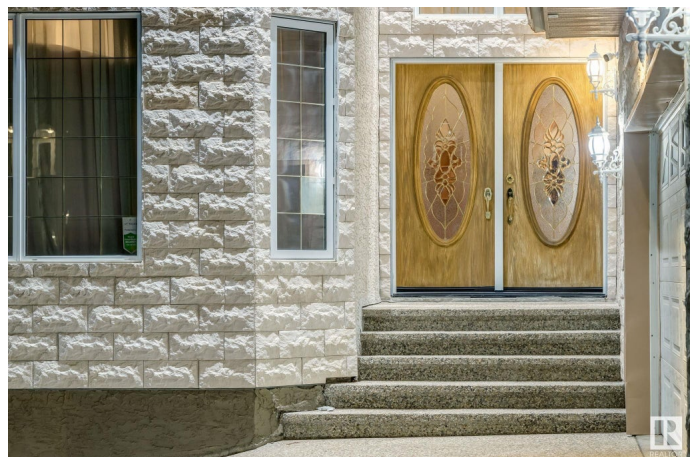
STUNNING WALKOUT in desirable Hudson!

This executive 2 storey luxury home with **SEPARATE ENTRANCE** is absolutely gorgeous! Featuring 7 bedrooms, 4 bathrooms & all the high end finishings you would expect in a home of this caliber, including 3 fireplaces (2 are Italian marble), soaring 18ft. ceilings, crown molding, wainscoting, Italian crystal chandeliers, marble & hardwood floors & an abundance of designer accents. The main level has a grand entrance, elegant living room, soaring cathedral ceilings, massive windows, formal dining room, chef's kitchen & breakfast nook opening to the wrap around deck & completed with a family room, bath & bedroom/office. The magnificent staircase leads upstairs to a luxury primary suite which is second to none with private balcony & spa like ensuite. There are 3 more bedrooms & bathroom. The basement is beautifully finished with it's own furnace & HWT, 2nd kitchen, living room, laundry & 2 bedrooms. Backing onto GREENSPACE - the view is amazing! **IMPRESSIVE!**

Built in 2005

Essential Information

MLS® #	E4426165
Price	\$1,150,000



Bedrooms	6
Bathrooms	4.00
Full Baths	4
Square Footage	3,202
Acres	0.00
Year Built	2005
Type	Single Family
Sub-Type	Detached Single Family
Style	2 Storey
Status	Active

Community Information

Address	13436 140 Avenue
Area	Edmonton
Subdivision	Hudson
City	Edmonton
County	ALBERTA
Province	AB
Postal Code	T6V 1W4

Amenities

Amenities	Deck, Detectors Smoke, Walkout Basement, See Remarks
Parking Spaces	6
Parking	Double Garage Attached

Interior

Interior Features	ensuite bathroom
Appliances	Dryer-Two, Refrigerators-Two, Stoves-Two, Washers-Two, Dishwasher-Two, Microwave Hood Fan-Two
Heating	Forced Air-2, Natural Gas
Fireplace	Yes
Fireplaces	Mantel, Marble Surround, See Remarks
Stories	3
Has Basement	Yes
Basement	Full, Finished

Exterior

Exterior	Wood, Stucco
Exterior Features	Backs Onto Park/Trees, Fenced, Landscaped, Park/Reserve, Picnic

Area, Playground Nearby, Public Transportation, Schools, Shopping
Nearby, See Remarks

Roof Asphalt Shingles
Construction Wood, Stucco
Foundation Concrete Perimeter

Additional Information

Date Listed March 17th, 2025
Days on Market 43
Zoning Zone 27

DATA IS DEEMED RELIABLE BUT IS NOT GUARANTEED ACCURATE BY THE REALTORS® ASSOCIATION OF EDMONTON. COPYRIGHT 2025 BY THE REALTORS® ASSOCIATION OF EDMONTON. ALL RIGHTS RESERVED. Trademarks are owned or controlled by the Canadian Real Estate Association (CREA) and identify real estate professionals who are members of CREA (REALTOR®, REALTORS®) and/or the quality of services they provide (MLS®, Multiple Listing Service®)

Listing information last updated on April 29th, 2025 at 5:32am MDT