

\$175,000 - 105 10520 80 Avenue, Edmonton

MLS® #E4425389

\$175,000

1 Bedroom, 1.00 Bathroom, 690 sqft

Condo / Townhouse on 0.00 Acres

Queen Alexandra, Edmonton, AB

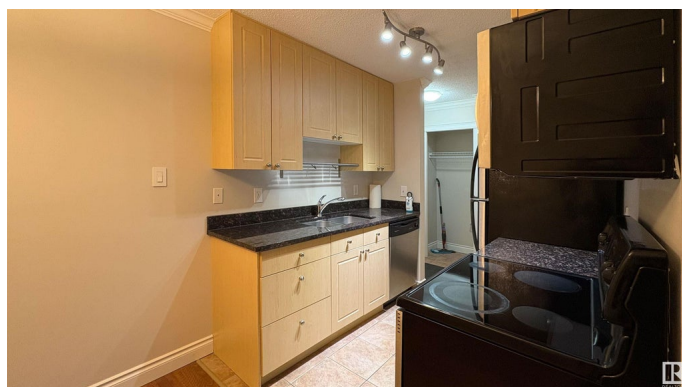
Just steps from Whyte Avenue and within walking distance to the University of Alberta, this freshly painted ground-floor condo in Cambridge Place offers stylish urban living! Featuring 742 sqft of bright, open-concept space, this one-bedroom, one-bathroom unit includes sleek laminate and tile flooring throughout. The spacious living room is filled with natural light and opens onto a private balcony overlooking a serene green space. The dining area is perfect for hosting, while the walk-through kitchen boasts stainless steel appliances and a functional design. The generously sized bedroom offers ample closet space, and the in-suite laundry with extra storage adds everyday convenience. A contemporary four-piece bathroom completes the home. Cambridge Place is a well-managed building, ideally located near the vibrant shops, restaurants, and amenities of Whyte Avenue. With a dedicated parking stall and easy access to everything the area has to offer, perfect for students, professionals, or investors alike!

Built in 1981

Essential Information

MLS® # E4425389

Price \$175,000



Bedrooms	1
Bathrooms	1.00
Full Baths	1
Square Footage	690
Acres	0.00
Year Built	1981
Type	Condo / Townhouse
Sub-Type	Lowrise Apartment
Style	Single Level Apartment
Status	Active

Community Information

Address	105 10520 80 Avenue
Area	Edmonton
Subdivision	Queen Alexandra
City	Edmonton
County	ALBERTA
Province	AB
Postal Code	T6E 1V3

Amenities

Amenities	Detectors Smoke, No Animal Home, No Smoking Home, Security Door, Storage-In-Suite
Parking	Stall

Interior

Appliances	Dishwasher-Built-In, Freezer, Microwave Hood Fan, Refrigerator, Stacked Washer/Dryer, Stove-Electric
Heating	Baseboard, Water
# of Stories	4
Stories	4
Has Basement	Yes
Basement	None, No Basement

Exterior

Exterior	Wood, Brick, Stucco
Exterior Features	Back Lane, Playground Nearby, Public Transportation, Schools, Shopping Nearby
Roof	Tar & Gravel

Construction	Wood, Brick, Stucco
Foundation	Concrete Perimeter

School Information

Elementary	Mill Creek, McKernan
Middle	Allendale
High	Strathcona

Additional Information

Date Listed	March 13th, 2025
Days on Market	47
Zoning	Zone 15
Condo Fee	\$352

DATA IS DEEMED RELIABLE BUT IS NOT GUARANTEED ACCURATE BY THE REALTORS® ASSOCIATION OF EDMONTON. COPYRIGHT 2025 BY THE REALTORS® ASSOCIATION OF EDMONTON. ALL RIGHTS RESERVED. Trademarks are owned or controlled by the Canadian Real Estate Association (CREA) and identify real estate professionals who are members of CREA (REALTOR®, REALTORS®) and/or the quality of services they provide (MLS®, Multiple Listing Service®)

Listing information last updated on April 29th, 2025 at 3:02pm MDT