

\$794,000 - 6634 Crawford Landing Landing, Edmonton

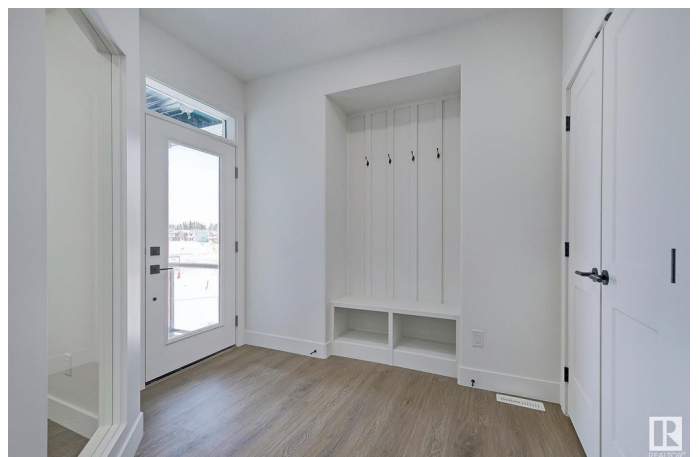
MLS® #E4423803

\$794,000

3 Bedroom, 2.50 Bathroom, 2,300 sqft
Single Family on 0.00 Acres

Chappelle Area, Edmonton, AB

Klair Custom Homes invites you to live in the beautiful nature inspired niche of Crawford Landing! This 2300 SQFT WALKOUT offers SPICE KITCHEN, main floor OFFICE, OPEN TO ABOVE, FIREPLACE, BUILT IN APPLIANCES, BONUS RM, UPPER LEVEL LAUNDRY, UPPER LEVEL TECH SPACE & more! The inviting entrance leads you pass the perfect main flr DEN & into your huge living room with an Open to Below VAULT anchored by an inviting fireplace and custom feature wall. The kitchen includes cook top in addition to the butlers/spice kitchen for all things entertaining. Mudroom, foyer, custom accents, ceiling details & touches complete this level. Upstairs welcomes you with a versatile BONUS ROOM & 3 full bedrooms, EACH WITH ITS OWN WALK IN CLOSET. Views of old growth trees adorn the windows inviting you to the adjacent path and trails leading to the untouched serenity of the nearby environmental reserve and pond system. Aggregate, Hardie Board Siding, WALK OUT BASEMENT, surrounded by open and untouched nature! Welcome Home!



Built in 2025

Essential Information

MLS® #	E4423803
Price	\$794,000

Bedrooms	3
Bathrooms	2.50
Full Baths	2
Half Baths	1
Square Footage	2,300
Acres	0.00
Year Built	2025
Type	Single Family
Sub-Type	Detached Single Family
Style	2 Storey
Status	Active

Community Information

Address	6634 Crawford Landing Landing
Area	Edmonton
Subdivision	Chappelle Area
City	Edmonton
County	ALBERTA
Province	AB
Postal Code	T6W 4L5

Amenities

Amenities	Ceiling 9 ft., Closet Organizers, Deck, Hot Water Natural Gas, No Animal Home, No Smoking Home, Vaulted Ceiling, Vinyl Windows, Walkout Basement, HRV System, Natural Gas BBQ Hookup, Natural Gas Stove Hookup
Parking Spaces	4
Parking	Double Garage Attached

Interior

Interior Features	ensuite bathroom
Appliances	Dishwasher-Built-In, Dryer, Garage Control, Garage Opener, Hood Fan, Oven-Built-In, Refrigerator, Stove-Countertop Electric, Stove-Gas, Washer
Heating	Forced Air-1, Natural Gas
Fireplace	Yes
Fireplaces	Direct Vent
Stories	2
Has Basement	Yes

Basement Full, Unfinished

Exterior

Exterior Wood, Hardie Board Siding

Exterior Features Airport Nearby, Backs Onto Park/Trees, Cul-De-Sac, Environmental Reserve, No Back Lane, No Through Road, Park/Reserve, Picnic Area, Playground Nearby, Private Setting, Public Transportation, Schools, Shopping Nearby, Partially Fenced

Roof Asphalt Shingles

Construction Wood, Hardie Board Siding

Foundation Concrete Perimeter

Additional Information

Date Listed March 4th, 2025

Days on Market 54

Zoning Zone 55

DATA IS DEEMED RELIABLE BUT IS NOT GUARANTEED ACCURATE BY THE REALTORS® ASSOCIATION OF EDMONTON. COPYRIGHT 2025 BY THE REALTORS® ASSOCIATION OF EDMONTON. ALL RIGHTS RESERVED. Trademarks are owned or controlled by the Canadian Real Estate Association (CREA) and identify real estate professionals who are members of CREA (REALTOR®, REALTORS®) and/or the quality of services they provide (MLS®, Multiple Listing Service®)

Listing information last updated on April 26th, 2025 at 10:47pm MDT